



Jeremy Hardison

Planning & Development Director





# Area of Concern





# Tidal Flooding



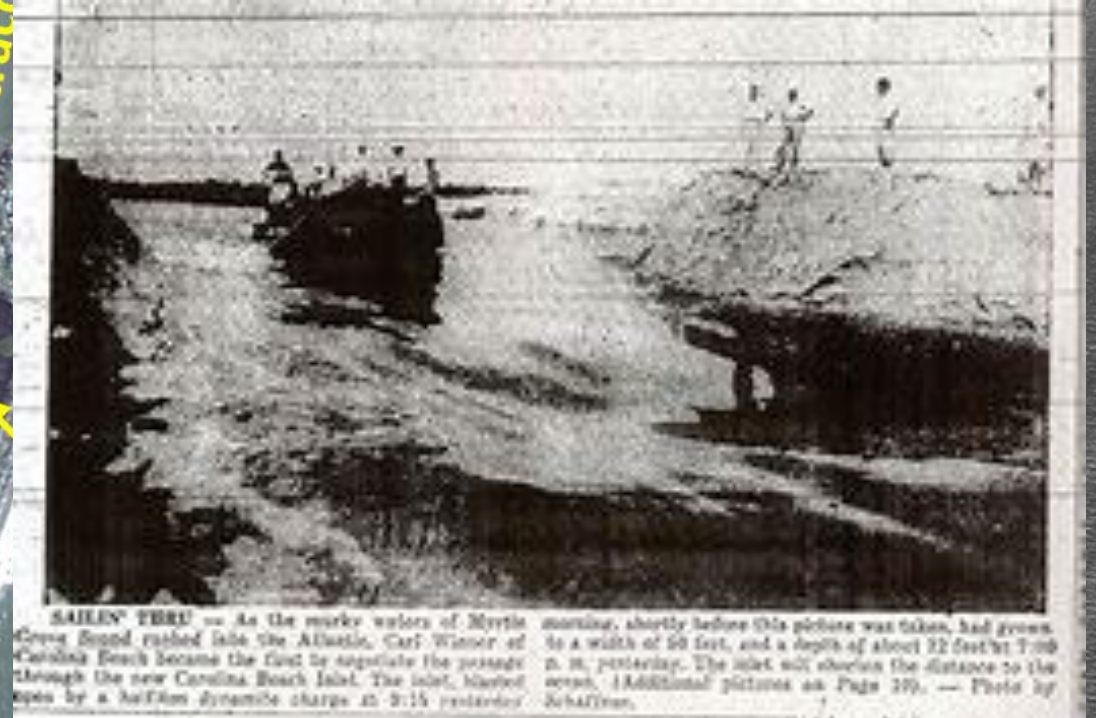
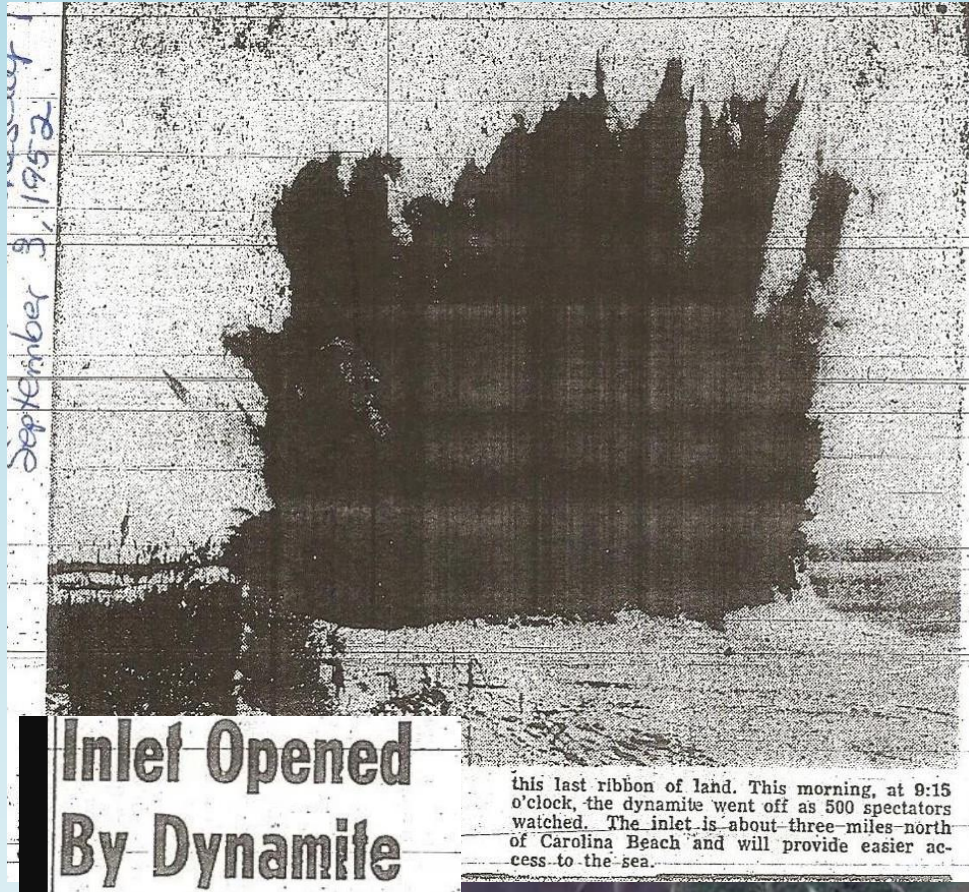


# Nuisance flooding





# How did we get here?









# Issue

## Shoreline Protection





# Stormwater Infrastructure





# Stormwater





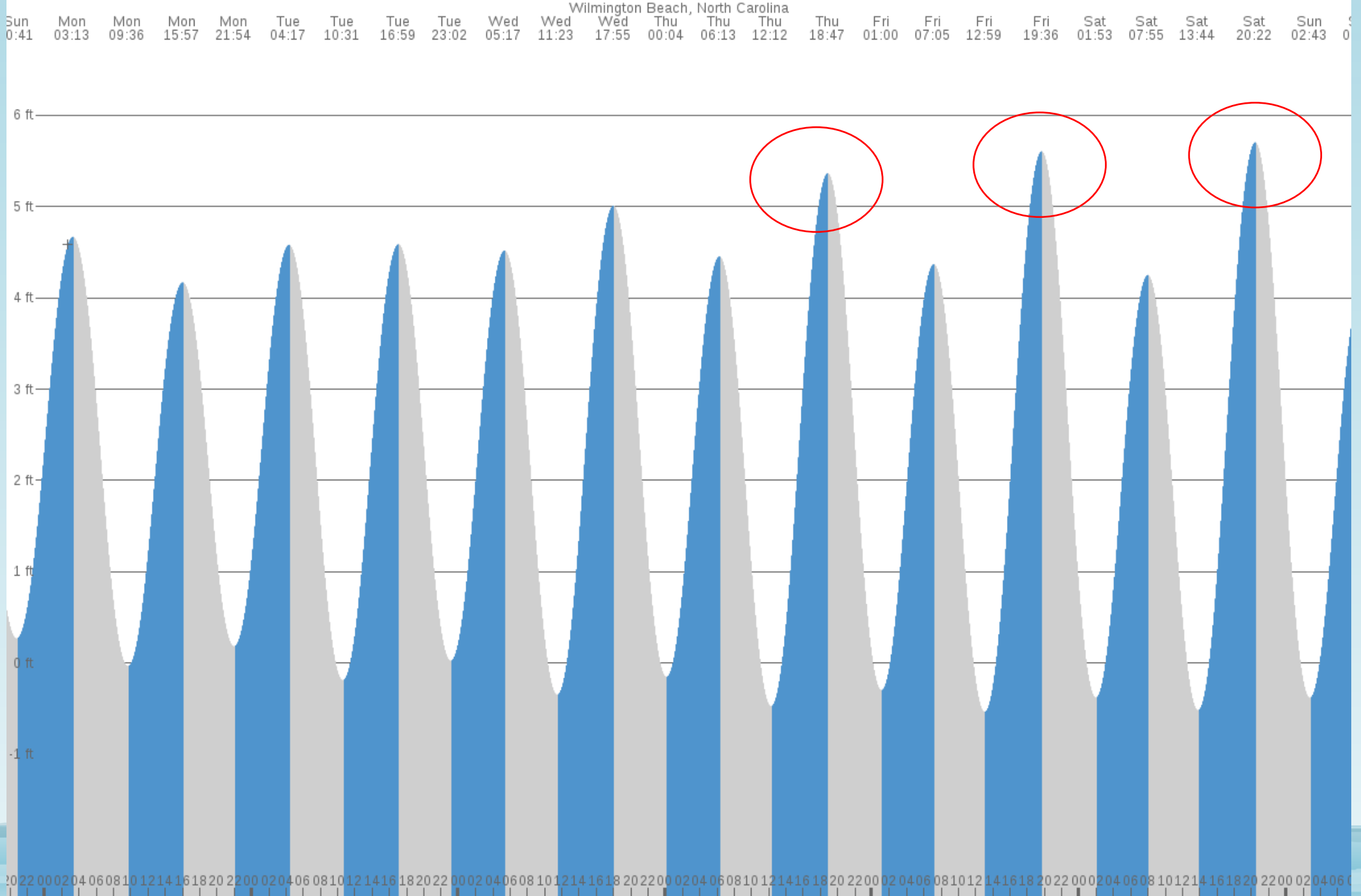
# Problem





# Tides

5 →









# Canal Drive Flooding Advisory Committee

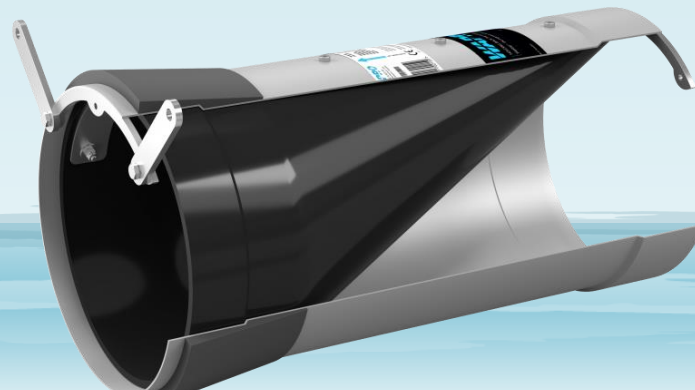


- Promote awareness of and solve issues related to tidal and stormwater flooding
- Endorsed a Study
  - Surveyed Existing Bulkhead Elevation Condition
  - Stormwater Outfall & Inlet Surveys
  - Developed bulkhead height based on historical king tides.
- Recommend town ordinances that improve the community's ability to deal with potential tidal rise.
  - Drafted a Bulkhead Ord.
  - Driving vehicles through flooding streets
- Contacted properties with no or inadequate Bulkheads
- Developed a plan to improve the Town street ends

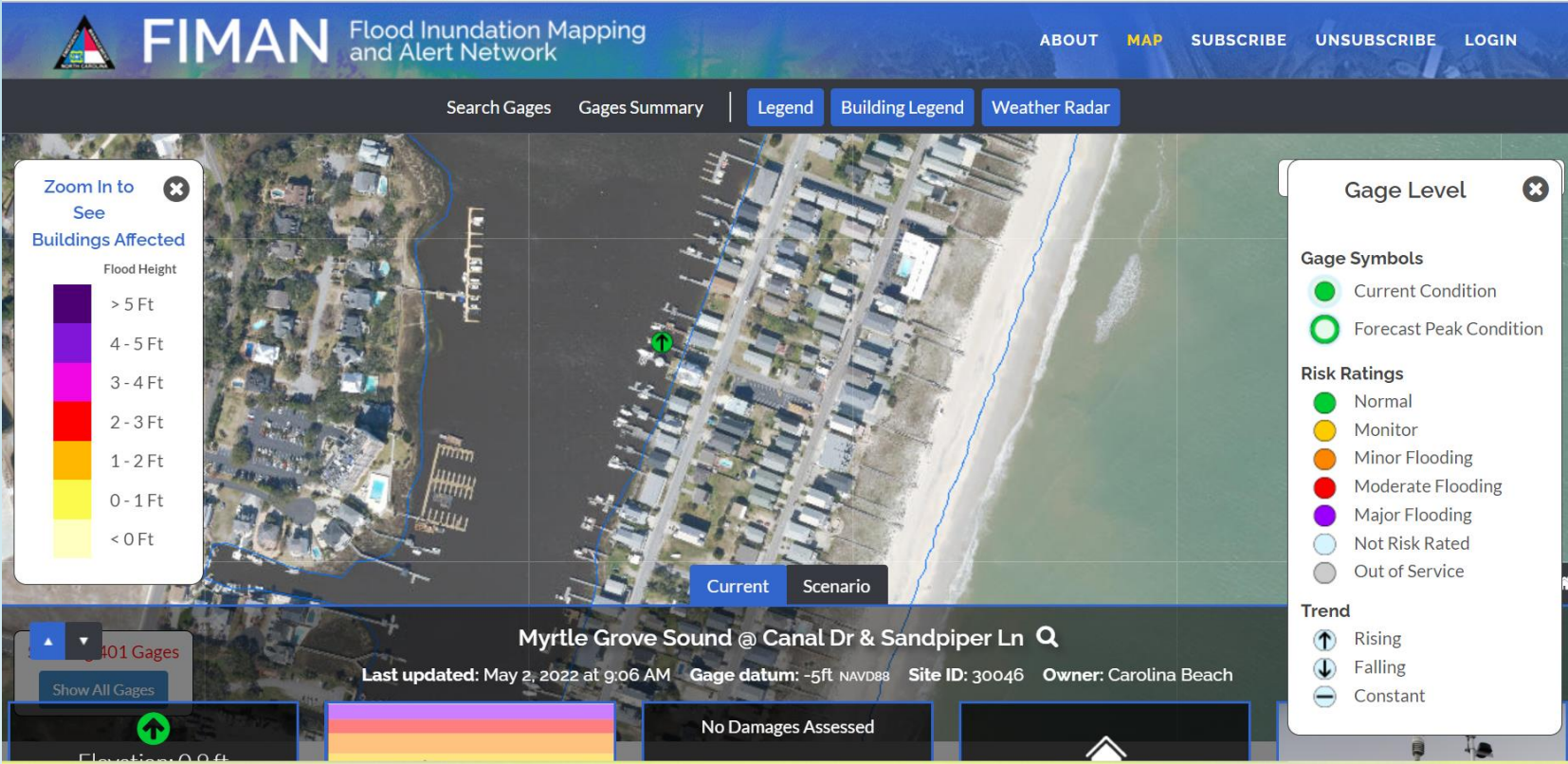


# Ongoing

- Installation of WaStop® Inline Check Valves backflow prevention devices at the remaining outfall locations along the Carolina Beach Yacht Basin,
- Re-lining the stormwater pipe network, Repair leaks, and other structural improvements
- Evaluate the impacts of abandoned outfalls and seal if needed
- Routine maintenance of stormwater system, including check valves
- Promoting stormwater initiatives
- Develop LUP policies to increase resiliency to flooding

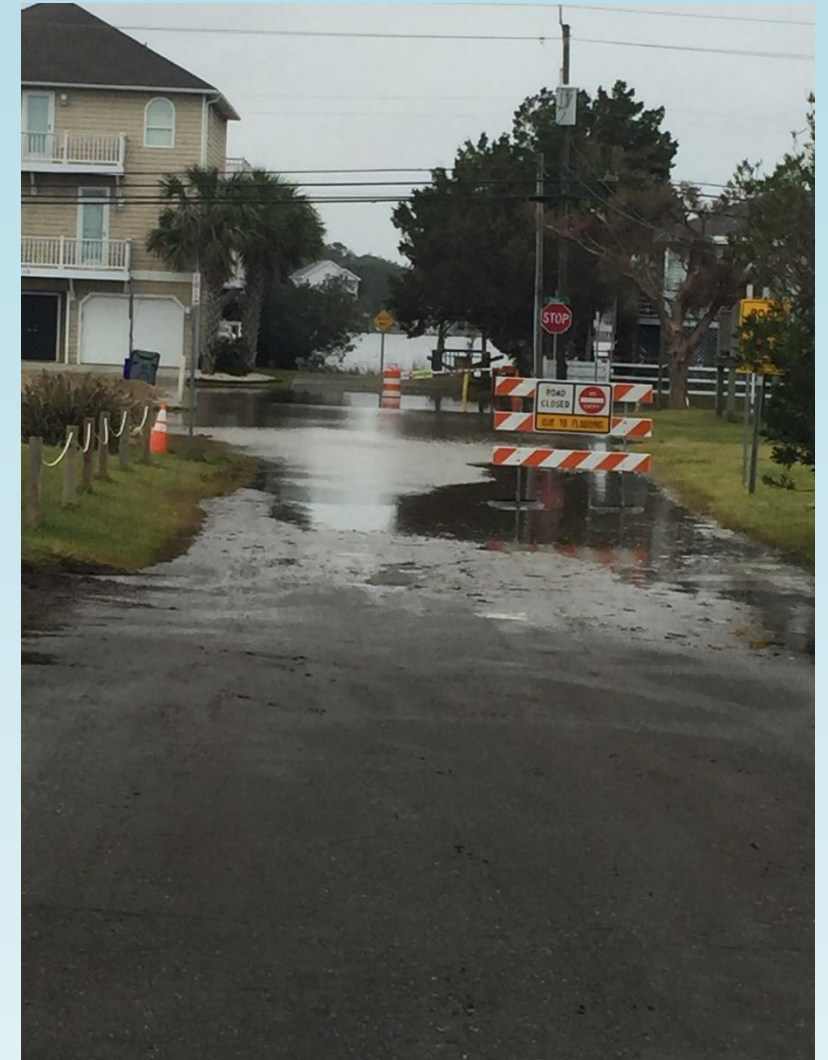








# Warning Systems





# Elevation





# Monitored & Data Collection









