

# WILMINGTON DISTRICT: U.S. ARMY CORPS OF ENGINEERS PROGRAM UPDATE

Christine M. Brayman, PMP  
Deputy District Engineer for Programs &  
Project Management

Robert (Bob) W. Keistler, P.E.  
Civil Works Programs & Project Management

NCBIWA 2023 Spring Meeting  
May 11-12, 2023

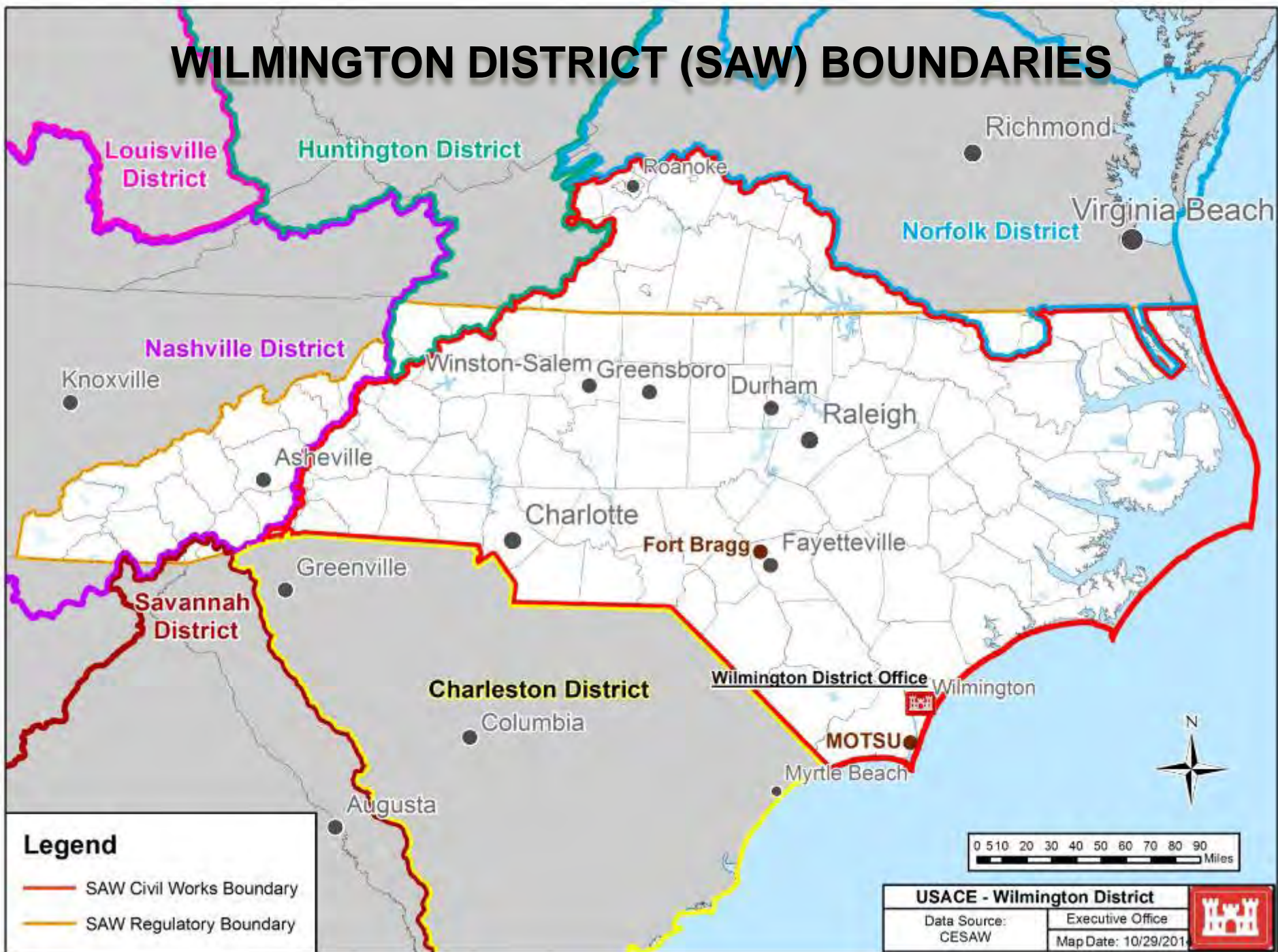
*Working Today to Build a Better Tomorrow*



US Army Corps  
of Engineers®



# WILMINGTON DISTRICT (SAW) BOUNDARIES



# Funding Related Information

- The U.S. Army Corps of Engineers (Corps) is an Executive Branch agency within the Department of Defense.
- The Corps is a “Project” Funded Organization.
- Corps Civil Works Projects (Authorization vs. Appropriation)
- Civil Works Appropriations (Types of Funding / Color of Money)
  - Investigations
  - Construction
  - Operation & Maintenance
  - Regulatory
  - Etc.
- Fiscal Year for the Federal Government (Oct 1 to Sept 30)
- Budget Cycle (Timing of Funding)



US Army Corps  
of Engineers ®







Wilmington Harbor Anchorage Basin Dredging

**FY 2023  
PRESIDENT'S  
BUDGET  
\$93,413,000**

**FY 2024  
PRESIDENT'S  
BUDGET  
\$81,627,000**

- Regulatory & FCCE not included in totals



US Army Corps  
of Engineers.

# WILMINGTON DISTRICT FUNDING ALLOCATION SUMMARY



	<u>FY 2023</u> <u>PRESIDENT'S</u> <u>BUDGET</u>	<u>FY2023</u> <u>OMNIBUS</u>	<u>FY2023</u> <u>Bipartisan</u> <u>Infra. Law</u> <u>(BIL)</u>	<u>FY 2023</u> <u>WORKPLAN</u>	<u>FY 2024</u> <u>PRESIDENT'S</u> <u>BUDGET</u>
INVESTIGATIONS	\$0	\$3,000,000	\$0	\$0	\$0
CONSTRUCTION	\$0	\$200,000	\$0	\$0	\$0
OPERATION & MAINTENANCE	\$93,413,000	\$102,783,000	\$16,198,000	\$2,653,000	\$81,627,000
GENERAL REGULATORY	\$7,767,771	\$7,767,771	\$1,200,000	\$0	\$7,768,000**
FLOOD CONTROL & COASTAL EMERGENCIES	\$700,000	\$700,000	\$0	\$0	\$700,000**
TOTAL	\$101,880,771	\$114,450,771	\$17,398,000	\$2,653,000	\$90,095,000

\* Does not include Inspection of Completed Works and Project Condition Surveys

\*\* Regulatory & Flood Control & Coastal Emergencies (FCCE) Estimate/ Place Holder

John H. Kerr Dam

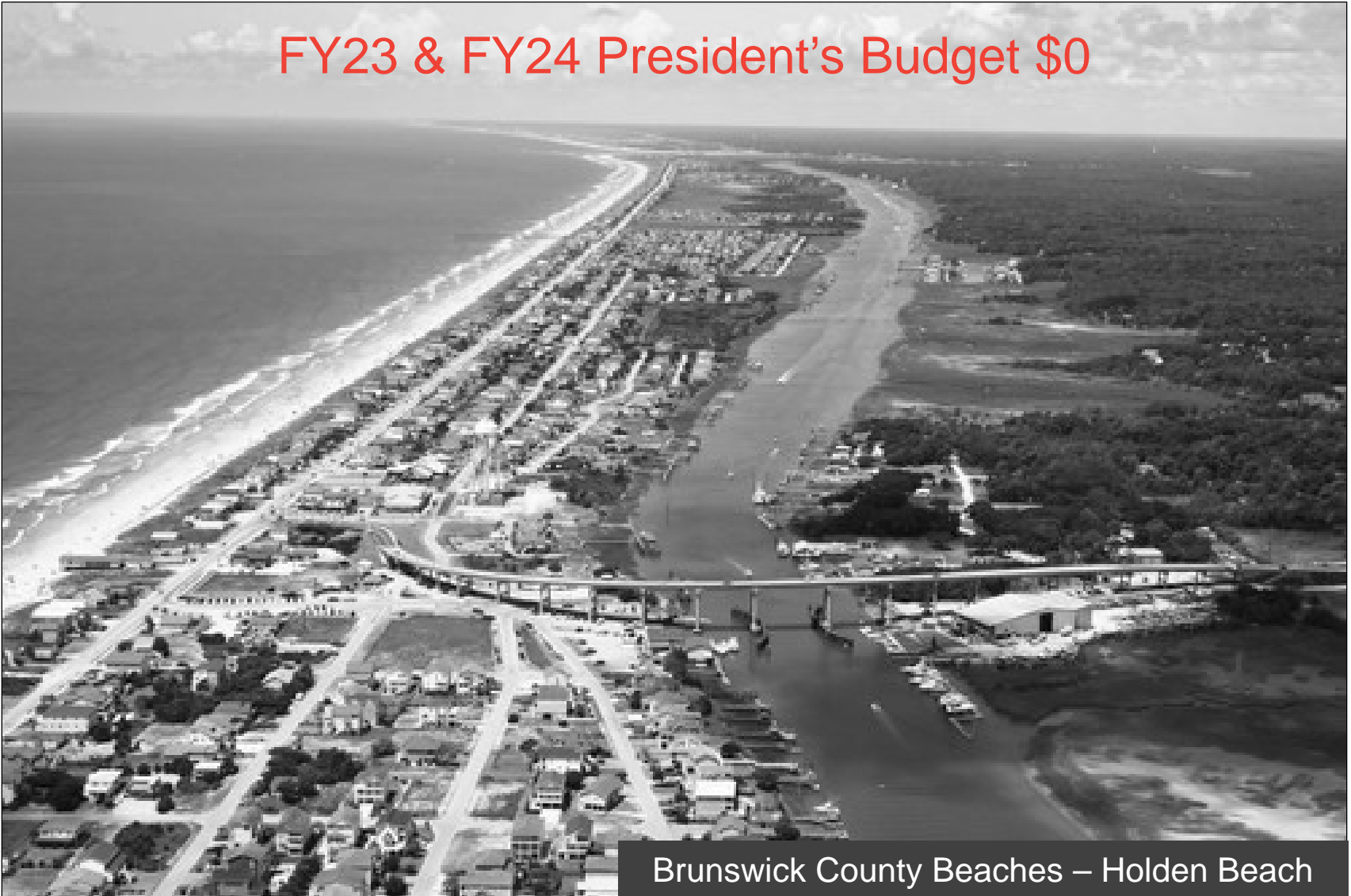


US Army Corps  
of Engineers.



# INVESTIGATIONS

FY23 & FY24 President's Budget \$0



Brunswick County Beaches – Holden Beach





# INVESTIGATIONS



## Funded Studies

Brunswick County Beaches:  
Holden Beach Portion General  
Reevaluation Report  
(continuing)

- Awaiting ASA(CW) approval for 3x3x3 waiver for \$4.25M total (inc. IEPR) and 23 months additional
- FY21& FY22 received \$550K
- FY23 Omnibus (Community Project Fund) \$1M
- FY24 \$425K Community Project Funding requested

Brunswick County Beaches:  
Oak Island Portion General  
Reevaluation Report  
(new start)

- FY23 Omnibus (Community Project Fund) \$500K
- FY24 President's Budget \$0; No requests
- Initial estimate of Study \$3M shared 50-50%
- May be adjusted after Project Management Plan is completed and aligned with HQUSACE

Wilmington Harbor 403  
(Sec. 403 of WRDA 2020)  
(continuing)

- Four year, \$8.3M cost sharing agreement signed Oct. 2022 with NCSPA
- FY21& FY22 received \$100K
- FY23 Omnibus (Community Project Fund) \$1.5M
- FY24 \$1.2M Community Project Fund req.
- Address unresolved comments from ASA(CW) Review Assessment on NCSPA's 203 Report inc. conduct of EIS
- Early scoping public meeting in June



# INVESTIGATIONS



## Unfunded Studies

### New Study Starts Require:

- Non-federal governmental entity as the sponsor
- Letter of Intent from Sponsor to enter into a Feasibility Cost Share Agreement
- Ability to fund the 50% cost share of a \$3M study over 3 years

### Current Opportunities

- Cape Fear River Basin Study
- South Atlantic Coastal Study Recommendations
- Spin off from River Basin Studies (ie New Bern, Washington, NC)
- Rollinson Channel [Hatteras Inlet] General Re-evaluation Report
- New Study under annual Sec. 7001 of WRRDA 2014 process opening soon  
<https://www.usace.army.mil/Missions/Civil-Works/Project-Planning/WRRDA-7001-Proposals/>





US Army Corps  
of Engineers.



# CONSTRUCTION

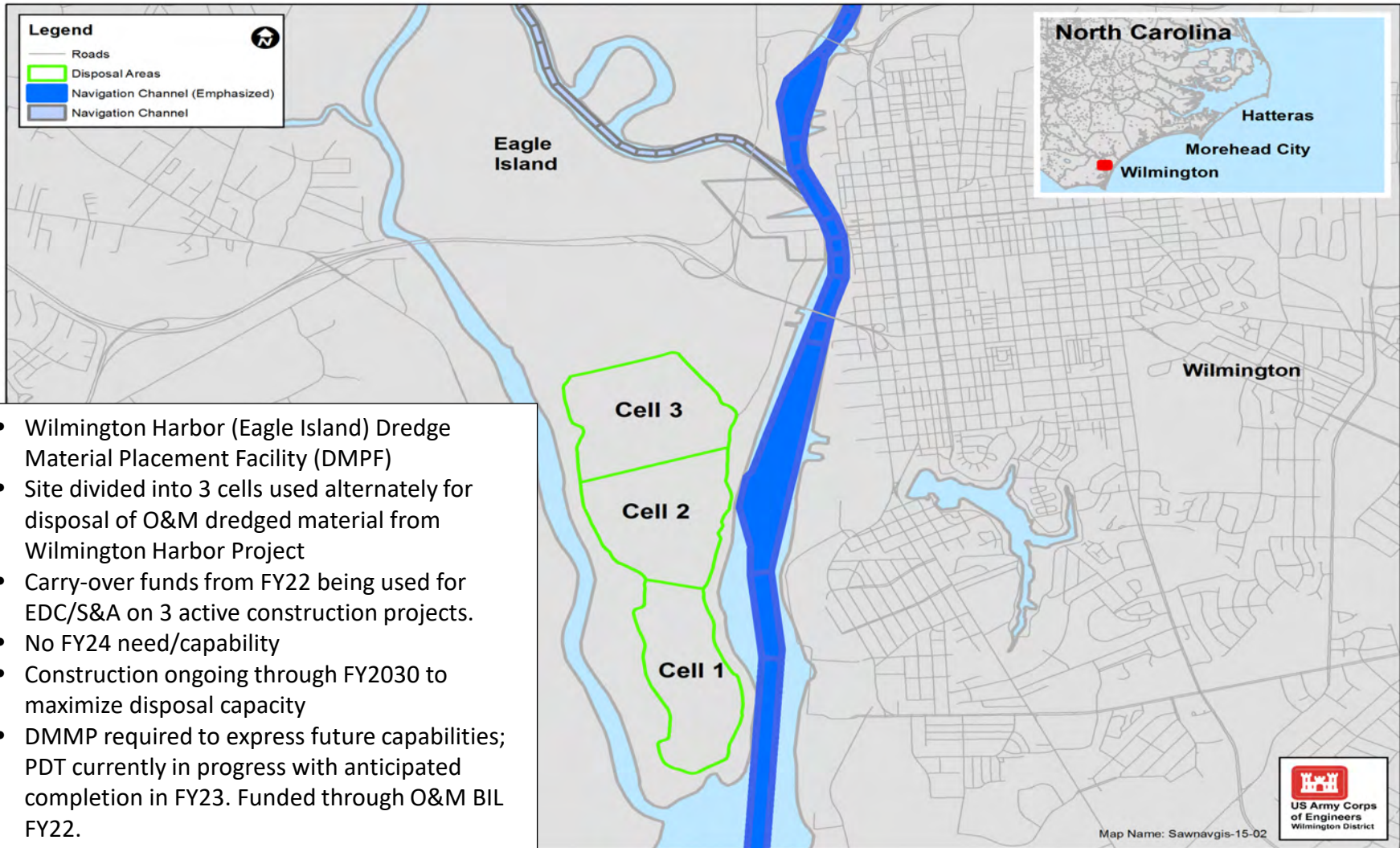


Wilmington Harbor D MDF (Eagle Island) – January 2023



US Army Corps  
of Engineers.

# WILMINGTON HARBOR DMPF



- Wilmington Harbor (Eagle Island) Dredge Material Placement Facility (DMPF)
- Site divided into 3 cells used alternately for disposal of O&M dredged material from Wilmington Harbor Project
- Carry-over funds from FY22 being used for EDC/S&A on 3 active construction projects.
- No FY24 need/capability
- Construction ongoing through FY2030 to maximize disposal capacity
- DMMP required to express future capabilities; PDT currently in progress with anticipated completion in FY23. Funded through O&M BIL FY22.



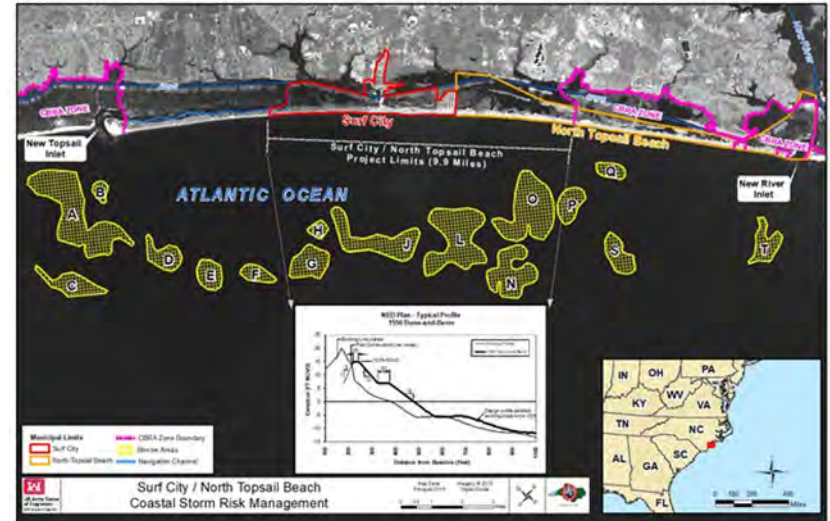


US Army Corps  
of Engineers



# SURF CITY (AND N. TOPSAIL BEACH) COASTAL STORM RISK MANAGEMENT

- Project authorized for construction in WRRDA 2014
- Fully funded under Disaster Relief Act (DRA) of 2019 for initial project construction
- The Town of North Topsail Beach (NTB) withdrew from the project in July 2021
- A validation report was completed in March 2022 demonstrating that the Surf City (SC) only portion of the project was justified
- Completing a Post Authorization Change Report (PACR) to deauthorize the NTB portion of the project to allow for construction of the SC portion using DRA 19 funding.
- Targeting a December 2023 date for a signed PACR, recommending a Surf City (Only) project.
- Next steps would be to execute a Project Partnership Agreement (PPA) with the Town of Surf City, Certify Real Estate, and Issue / Award a contract for initial construction. All of this is scheduled to occur in 2024.



Surf City, NC – January 2023

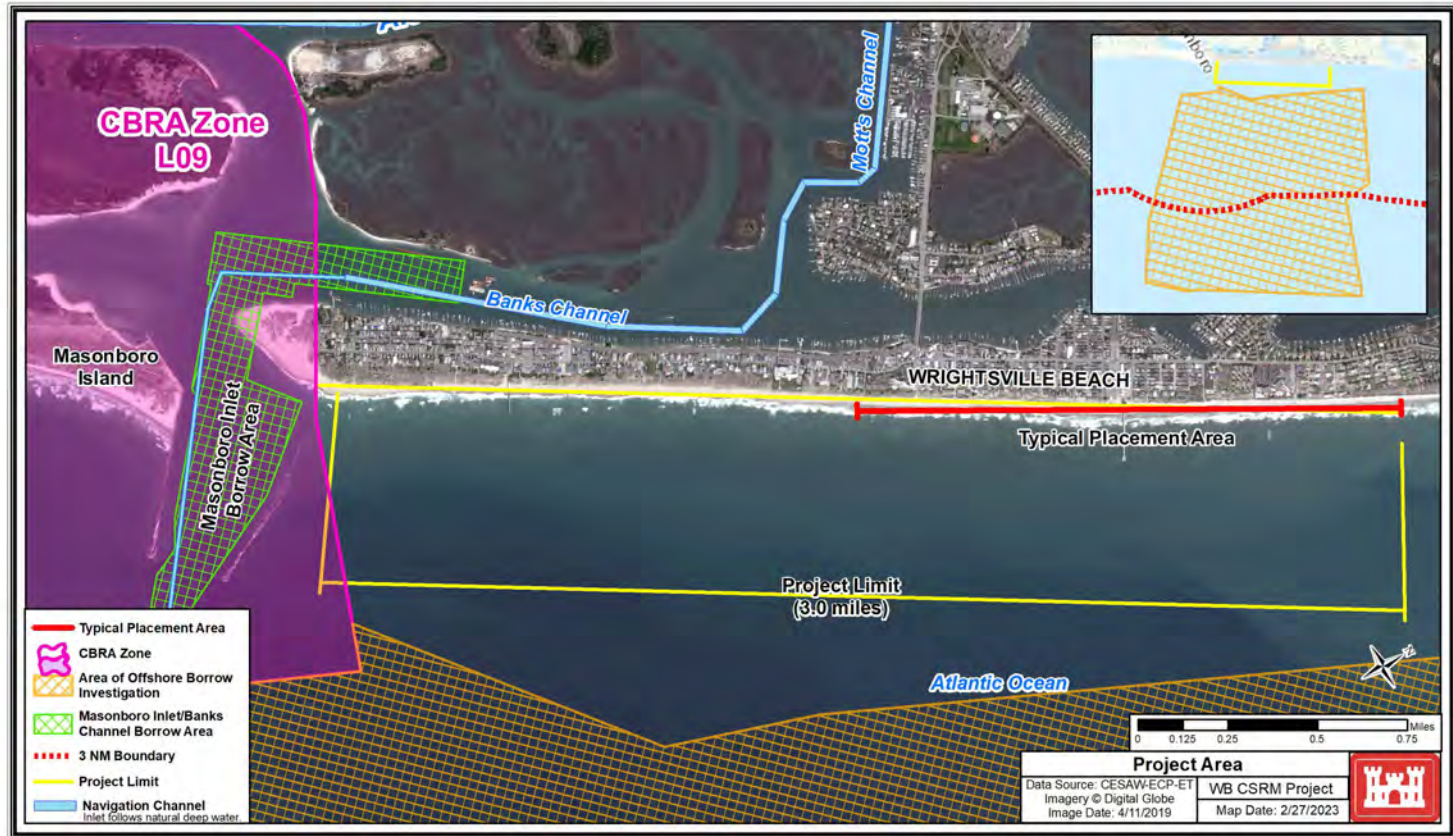




US Army Corps  
of Engineers



# WRIGHTSVILLE BEACH COASTAL STORM RISK MANAGEMENT



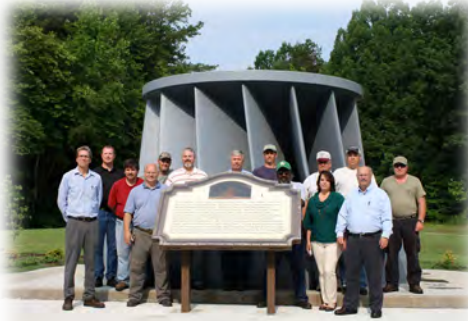
- The next rennourishment cycle was scheduled for sand placement in FY22 but is currently delayed due to a new interpretation of the Coastal Resources Barrier Act (CBRA). The PDT is working through these associated issues.
- The WB CSRM Contract is scheduled to be funded with emergency supplemental dollars (100% Federal).
- Currently targeting a summer contract award, with a November construction start (2023).





US Army Corps  
of Engineers.

# OPERATION & MAINTENANCE

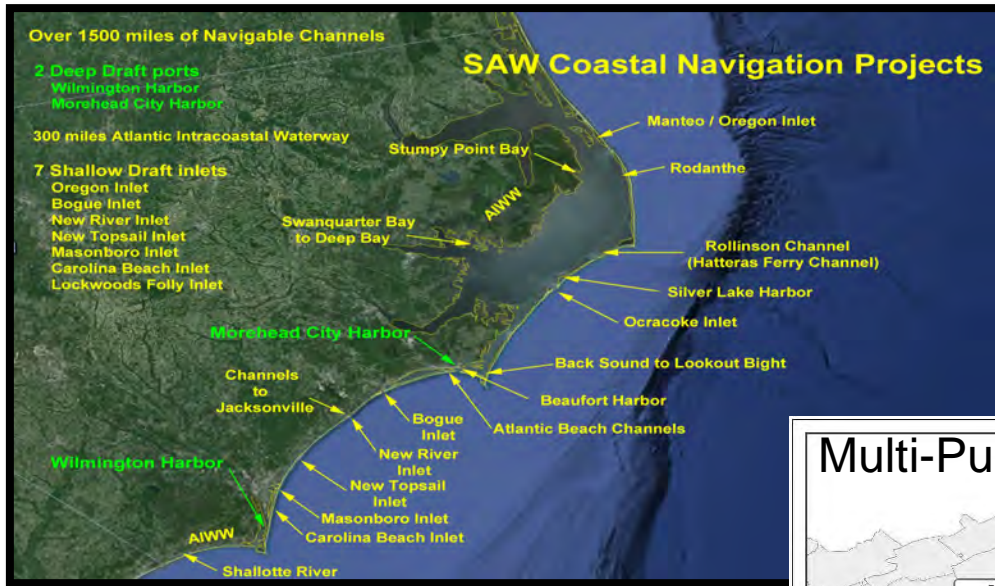






US Army Corps  
of Engineers.

# WILMINGTON DISTRICT O&M PROJECTS



Philpott Lake



John H. Kerr Lake



W. Kerr Scott Lake

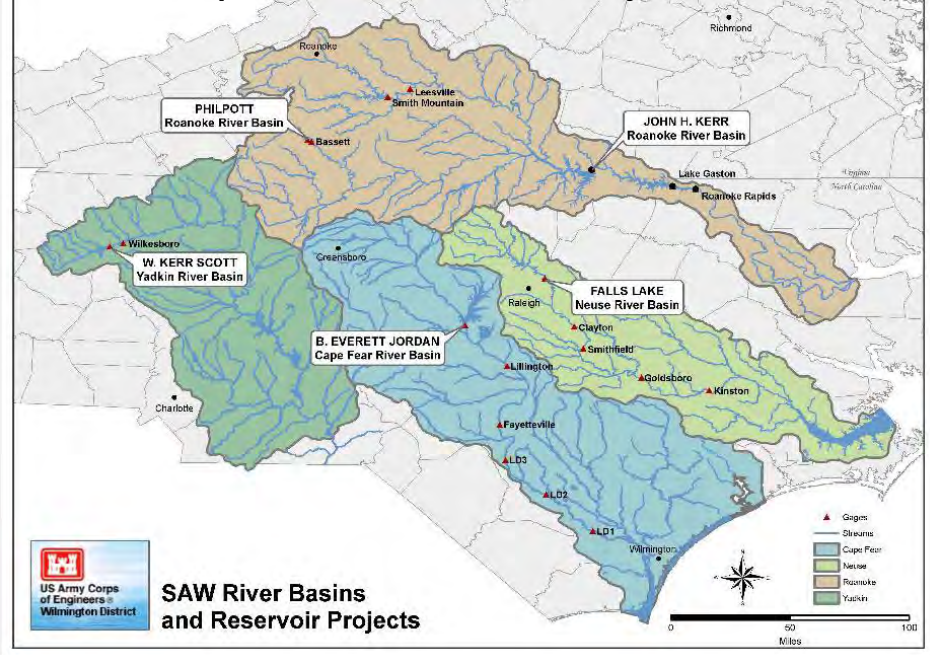


B. Everett Jordan Lake



Falls Lake

## Multi-Purpose Reservoir Projects



SAW River Basins  
and Reservoir Projects





US Army Corps  
of Engineers.

# OPERATION & MAINTENANCE SUMMARY - NAVIGATION



	<u>FY 2023</u> <u>PRESIDENT'S</u> <u>BUDGET</u>	<u>FY 2023</u> <u>OMNIBUS</u>	<u>FY2023 BIL</u>	<u>FY2023</u> <u>WORKPLAN</u>	<u>FY 2024</u> <u>PRESIDENT'S</u> <u>BUDGET</u>
WILMINGTON HARBOR, NC*	\$21,657,000	\$21,657,000	\$0	\$200,000	\$25,821,000
MOREHEAD CITY HARBOR, NC	\$24,919,000	\$24,919,000	\$0	\$0	\$18,381,000
MANTEO (SHALLOWBAG) BAY, NC	\$1,420,000	\$7,265,000	\$0	\$0	\$1,050,000
ATLANTIC INTRACOASTAL WATERWAY, NC*	\$15,955,000	15,805,000	\$0	\$0	\$6,373,000
ROLLINSON CHANNEL, NC	\$2,605,000	\$3,665,000	\$0	\$0	\$1,820,000
SILVER LAKE HARBOR, NC	\$560,000	\$560,000	\$0	\$530,000	\$910,000
NEW RIVER INLET	\$560,000	\$560,000	\$0	\$0	\$565,000
NEW TOPSAIL INLET AND CONNECTING CHANNELS, NC	\$0	\$0	\$0	\$0	\$535,000
AVON HARBOR, NC	\$0	\$0	\$0	\$0	\$0
BEAUFORT HARBOR, NC	\$0	\$0	\$0	\$0	\$0
BOGUE INLET AND CHANNEL, NC	\$0	\$0	\$0	\$0	\$0
CAROLINA BEACH INLET, NC	\$0	\$0	\$0	\$0	\$0
MASONBORO INLET AND CONNECTING CHANNELS, NC	\$0	\$0	\$0	\$0	\$0
LOCKWOODS FOLLY RIVER, NC	\$0	\$0	\$0	\$0	\$0
CHANNEL FROM BACK SOUND to LOOKOUT BIGHT, NC	\$0	\$0	\$0	\$1,923,000	\$0
WATERWAY CONNECTING PAMLICO SOUND AND BEAUFORT HARBOR, NC	\$0	\$2,615,000	\$0	\$0	\$0
<b>TOTAL (Navigation only)</b>	<b>\$67,676,000</b>	<b>\$77,046,000</b>	<b>\$0</b>	<b>\$2,653,000</b>	<b>\$55,455,000</b>

\*AIWW to receive \$20.25 M; Wilmington Harbor \$5.0 M in Bipartisan Infrastructure Law (BIL) funding in FY 2024.



US Army Corps  
of Engineers

# OPERATION & MAINTENANCE SUMMARY INLAND MULTIPURPOSE PROJECTS



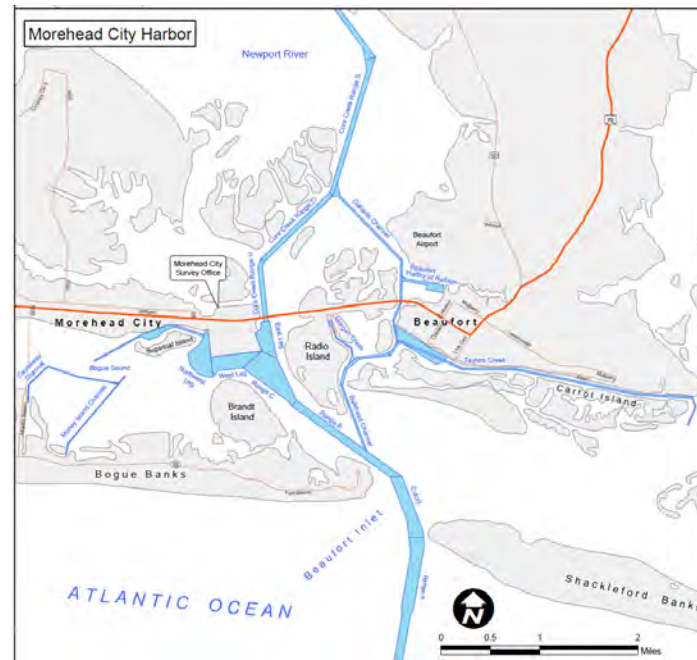
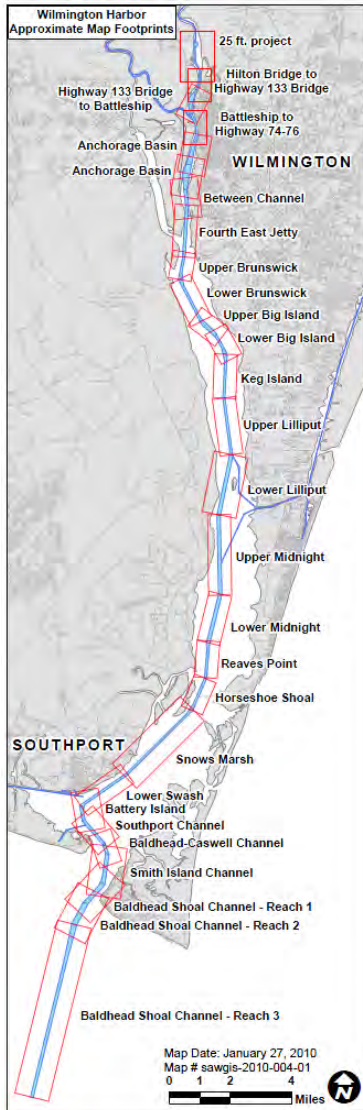
	<u>FY 2023</u> <u>PRESIDENT'S</u> <u>BUDGET</u>	<u>FY 2023</u> <u>OMNIBUS</u>	<u>FY2023 BIL</u>	<u>FY2023</u> <u>WORKPLAN</u>	<u>FY 2024</u> <u>PRESIDENT'S</u> <u>BUDGET</u>
CAPE FEAR RIVER ABOVE WILMINGTON, NC	\$484,000	\$484,000	\$0	\$0	\$508,000
B. EVERETT JORDAN DAM and LAKE, NC	\$1,942,000	\$1,942,000	\$2,288,000	\$0	\$2,016,000
FALLS LAKE, NC	\$1,910,000	\$1,910,000	\$160,000	\$0	\$2,023,000
JOHN H. KERR DAM and RESERVOIR, VA & NC	\$12,043,000	\$12,043,000	\$9,500,000	\$0	\$11,710,000
PHILPOTT LAKE, VA	\$4,480,000	\$4,480,000	\$550,000	\$0	\$4,875,000
W. KERR SCOTT DAM and RESERVOIR, NC	\$4,010,000	\$4,010,000	\$3,700,000	\$0	\$5,040,000
INSPECTION OF COMPLETED WORKS and PROJECT CONDITION SURVEYS	\$868,000	\$868,000	\$0	\$0	\$0
<b>TOTAL (Multipurpose Only)</b>	<b>\$25,737,000</b>	<b>\$25,737,000</b>	<b>\$16,198,000</b>	<b>\$0</b>	<b>\$26,172,000</b>





US Army Corps  
of Engineers

# WILMINGTON DISTRICT DEEP DRAFT PORTS



## Wilmington Harbor

- Authorized Depth:
  - Ocean Bar: 44 feet
  - To Bridge: 42 feet
  - Past Bridge: 32 to 25 feet
- Tonnage: 6.3 million
- National Rank: 67

## Morehead City Harbor

- Authorized Depth:
  - Range A: 47 feet
  - Cutoff Channel: 45 feet
  - Range B & C: 45 feet
  - Inner Harbor: 45 feet & 35 feet
- Tonnage: 1.8 million
- National Rank: 123





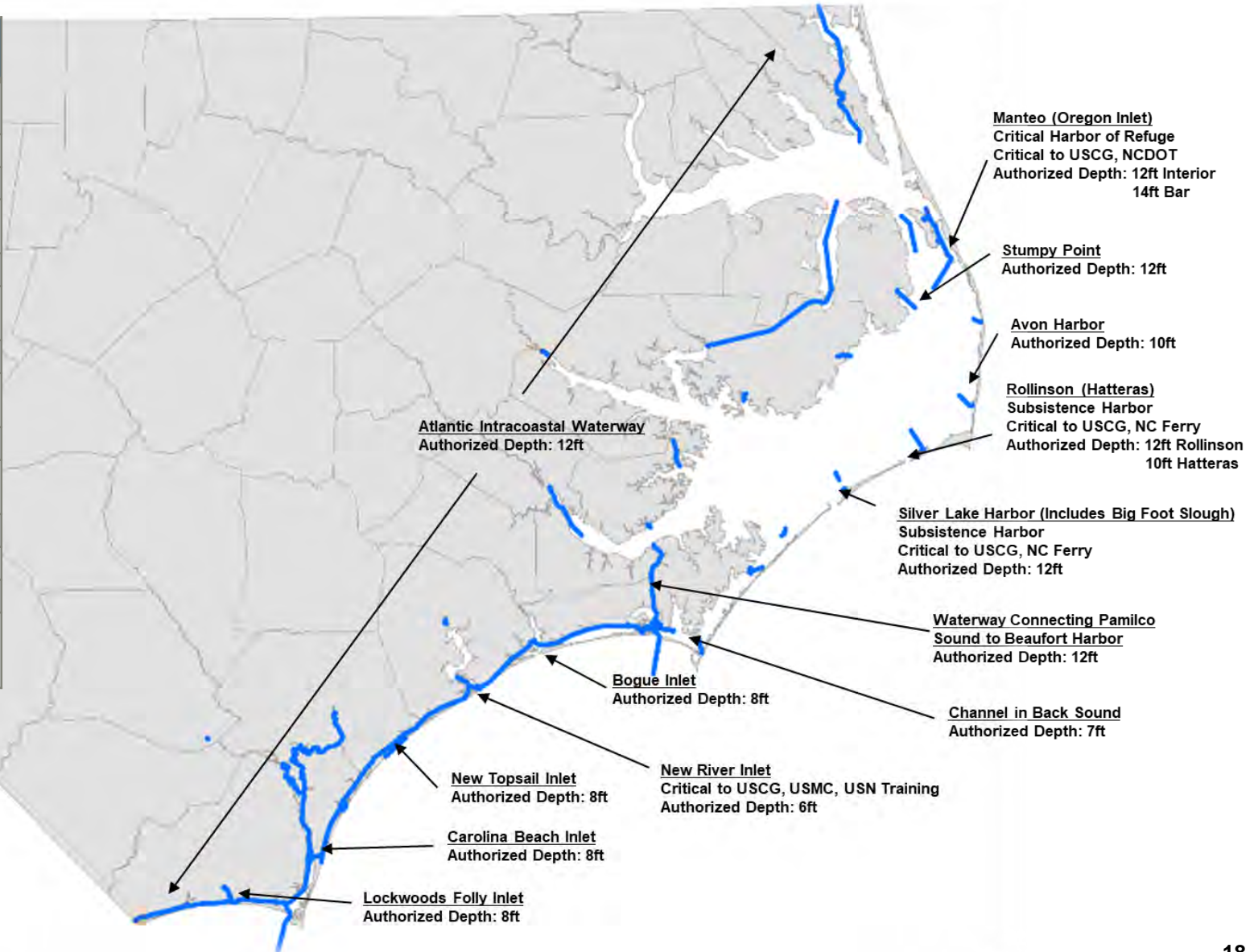
US Army Corps  
of Engineers

# WILMINGTON DISTRICT- SHALLOW DRAFT NAVIGATION



## Active Shallow Draft Projects

Atlantic Intracoastal Waterway
Avon Harbor
Beaufort Harbor, NC
Bogue Inlet and Channel, NC
Carolina Beach Inlet, NC
Channel from Back Sound to Lookout Bight, NC
Lockwoods Folly River, NC
Manteo (Shallowbag) Bay, NC
New River Inlet, NC
New Topsail Inlet and Connecting Channels, NC
Rollinson Channel, NC
Silver Lake Harbor, NC
Stumpy Point Bay, NC
Waterway Connecting Pamlico Sound and Beaufort Harbor, NC





US Army Corps  
of Engineers

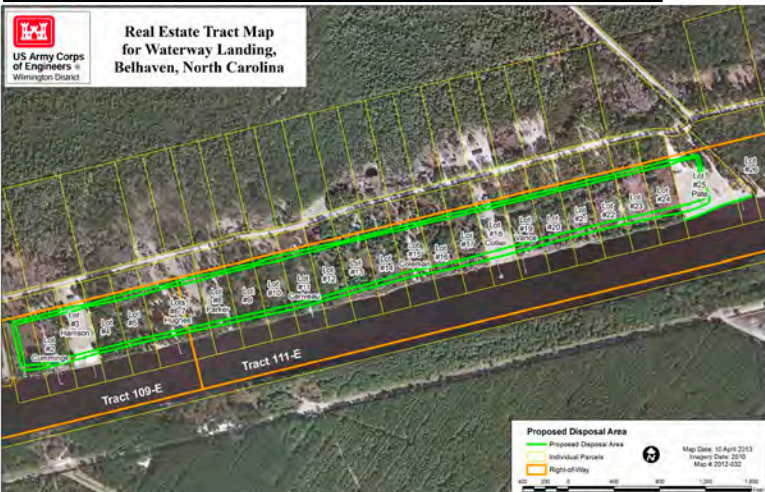
# DREDGED MATERIAL MANAGEMENT FOR SHALLOW DRAFT



Island H – Manteo-Shallowbag Bay



DA 277 across from Southport Marina



DA-15 – Alligator-Pungo Landcut - AIWW

- In many cases it's the local sponsor's responsibility to provide and maintain
- Development and encroachment interferes with our easement rights
- Impacting our ability to maintain waterways
- USACE Policy placement area usage by non-federal entities
- PAS Study on non-federal placement areas and need

# SAW Contract Update

## Coastal Storm Risk Management (CSRM) Solicitations:

- FY-24 Wrightsville Beach CSRM Contract (4<sup>th</sup> Q FY-23 Award)

## O&M Navigation Solicitations:

- FY-24 SAD Regional Harbor Dredging Contract (RHDC) (4<sup>th</sup> Q FY-23 Award)
- FY-24 Wilmington Harbor Anchorage Basin / Mid-River Maintenance Dredging (MD) Contract (4<sup>th</sup> Q FY-23 Award)
- FY-24 Morehead City Harbor Ocean Bar MD Contract (4<sup>th</sup> Q FY-23 Award)
- FY-24 Morehead City Inner Harbor MD Contract (4<sup>th</sup> Q FY-23/1<sup>st</sup> Q FY-24 Award)
- FY-24 AIWW Inlet Crossing MD Contact (4<sup>th</sup> Q FY-23 Award)
- FY-24 Rollinson Channel/Stumpy Point MD Contract (4<sup>th</sup> Q FY-23 Award)
- FY-24 MOTSU MD Contract (4<sup>th</sup> Q FY-23 Award)
- FY 24 Backsound to Lookout Bight & NPS Channels MD Contract (FY-24 Award)
- FY24-25 Avon Harbor MD Contract (Targeting a late FY-24 Award)



US Army Corps  
of Engineers ®





# **USACE Wilmington District Points of Contact**

**Robert (Bob) W. Keistler, P.E.**

Chief of Civil Works

Programs and Project Management Branch

(910) 251-4709 (Work)

[robert.w.keistler@usace.army.mil](mailto:robert.w.keistler@usace.army.mil)

**Jeremiah (Jeremy) L. Smith, P.E.**

Chief Navigation Branch

(910) 251-4822

[jeremiah.l.smith@usace.army.mil](mailto:jeremiah.l.smith@usace.army.mil)

**Wilmington District Navigation Web Link:**

<https://www.saw.usace.army.mil/Missions/Navigation/>



US Army Corps  
of Engineers ®





US Army Corps  
of Engineers.



# Wilmington District

