

WILMINGTON DISTRICT: WHAT'S NEW ON THE COAST

Colonel Brad A. Morgan, P.E.
Commander, Wilmington District

Robert (Bob) W. Keistler, P.E.
Civil Programs & Project Branch

NCBIWA 26th Annual Conference
16 NOVEMBER 2023



US Army Corps
of Engineers®





U.S. ARMY

WHAT'S NEW WITH THE CORPS ON THE COAST

2



- Who is COL Brad Morgan?
- Wilmington Harbor Section 403 Project
- SAW Coastal Storm Risk Management (CSRM) Program
- SAW Coastal Navigation Program
- National Shallow Draft Fleet



U.S. ARMY



WILMINGTON DISTRICT (SAW) BOUNDARIES





U.S. ARMY

Funding Related Information



- The U.S. Army Corps of Engineers (Corps) is an Executive Branch agency within the Department of Defense.
- The Corps is a “Project” Funded Organization.
- Corps Civil Works Projects (Authorization vs. Appropriation)
- Civil Works Appropriations (Types of Funding / Color of Money)
 - Investigations
 - Construction
 - Operation & Maintenance
 - Regulatory
- Fiscal Year for the Federal Government Oct 1 to Sept 30
- Timing of Funding

WILMINGTON HARBOR 403

LETTER REPORT & ENVIRONMENTAL IMPACT STATEMENT



OVERVIEW.

Water Resources Development Act of 2020 (WRDA)

- Section 403 conditional authorization of deepening the main channel to 47' from the current depth of 42'.

Letter Report & Environmental Impact Statement

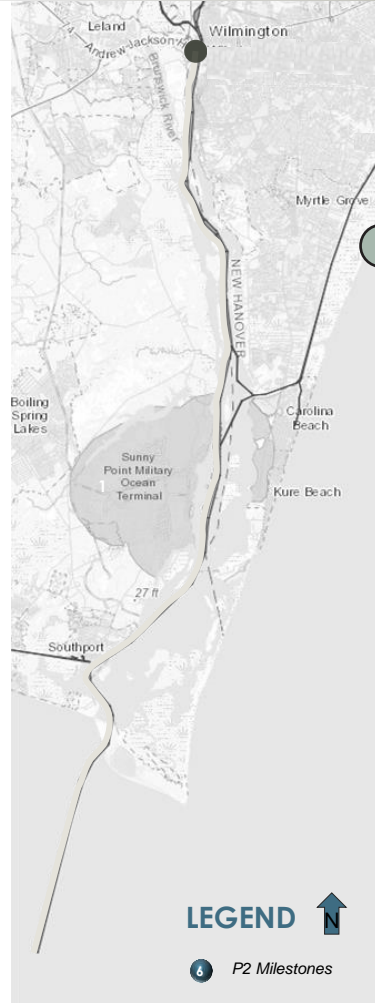
- An evaluation of technical, policy concerns noted in the ASA(CW)'s May 2020 Review Assessment of the North Carolina State Ports Authority's (NCSPA) February 2020 WRDA 203 Feasibility Study

TIMELINE OF EVENTS.

- | | |
|-----------------------|---|
| MAR 2023. | Engineering and Environmental modeling contract awarded to Stantec |
| JUN 2023. | Public Early Scoping Meeting Held |
| AUG 2023. | Preliminary Benefits and Costs Analysis completed |
| OCT/ NOV 2023. | Modeling Workshop held for state, federal and non-governmental environmental agencies
<i>(Led by the USACE Engineering Research & Development Center (ERDC))</i> |

WILMINGTON HARBOR 403

LETTER REPORT & ENVIRONMENTAL IMPACT STATEMENT



MAJOR MILESTONES

- **OCT 2024.** Notice of Intent to conduct an Environmental Impact Statement (EIS)
- **OCT 2025.** Public Review of EIS
- **APR 2026.** Final Report and EIS transmitted to Higher Headquarters

CSA, CONTRACTS, EARLY SCOPING, & ECONOMICS

- 1 **Cost Share Agreement**
 - Funding
 - Scheduling
 - Economics
 - Contract Coordination

ALTERNATIVE ANALYSIS

- Withdraw NOI
- Econ – FWOP
- Avg Annual Benefits & Cost
- Sea Level Rise
- Climate Change Analysis
- Coastal EN & ENV Contract Award
- Vibracore Contract Award
- EN Quantities & Materials
- Initial CSRA
- Communication Plan
- Early Public Engagement
- Review Plan
- Cost Engineering for Array of Alternatives
- Plan Formulation - Screening
- Econ - Future With Project
- Vibracore

ENVIRONMENTAL IMPACT STATEMENT (EIS)

- Biological Assessments
- Env. Justice Analysis
- HSI Modeling
- Risk & Uncertainty Analysis, AAEQ Benefits
- Delft 3D Model Bathymetry
- Water Quality
- Suspended Sediments
- Hydrodynamic, WQ & Sediment model runs
- Wave Transformation
- Shoreline Impacts
- Tide Range
- Vessel Wake Modeling
- Channel Morphology
- Groundwater Modeling
- Mitigation Plans

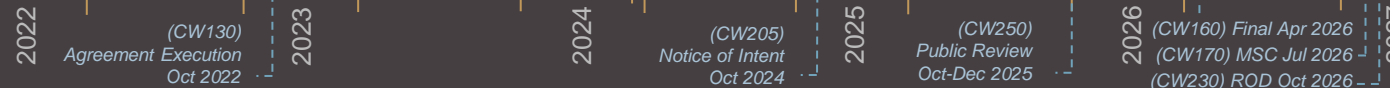
EIS, DRAFT REPORT, PUBLIC REVIEW

- Real Estate Assessments
- Cost Certification
- Draft Document Development
- 3 **Public Review**
 - ATR/ IEPR Review Initiated

FINAL REPORT & ROD

- Respond to Comments
- Revise Documents
- Cost Certification Post Review
- 4 **Final EIS & Report**
- 5 **MSC Report Endorsement**
- 6 **Record of Decision**

TIMELINE (Federal Fiscal Year)



WILMINGTON DISTRICT:

COASTAL STORM RISK MANAGEMENT (CSRM) PROGRAM

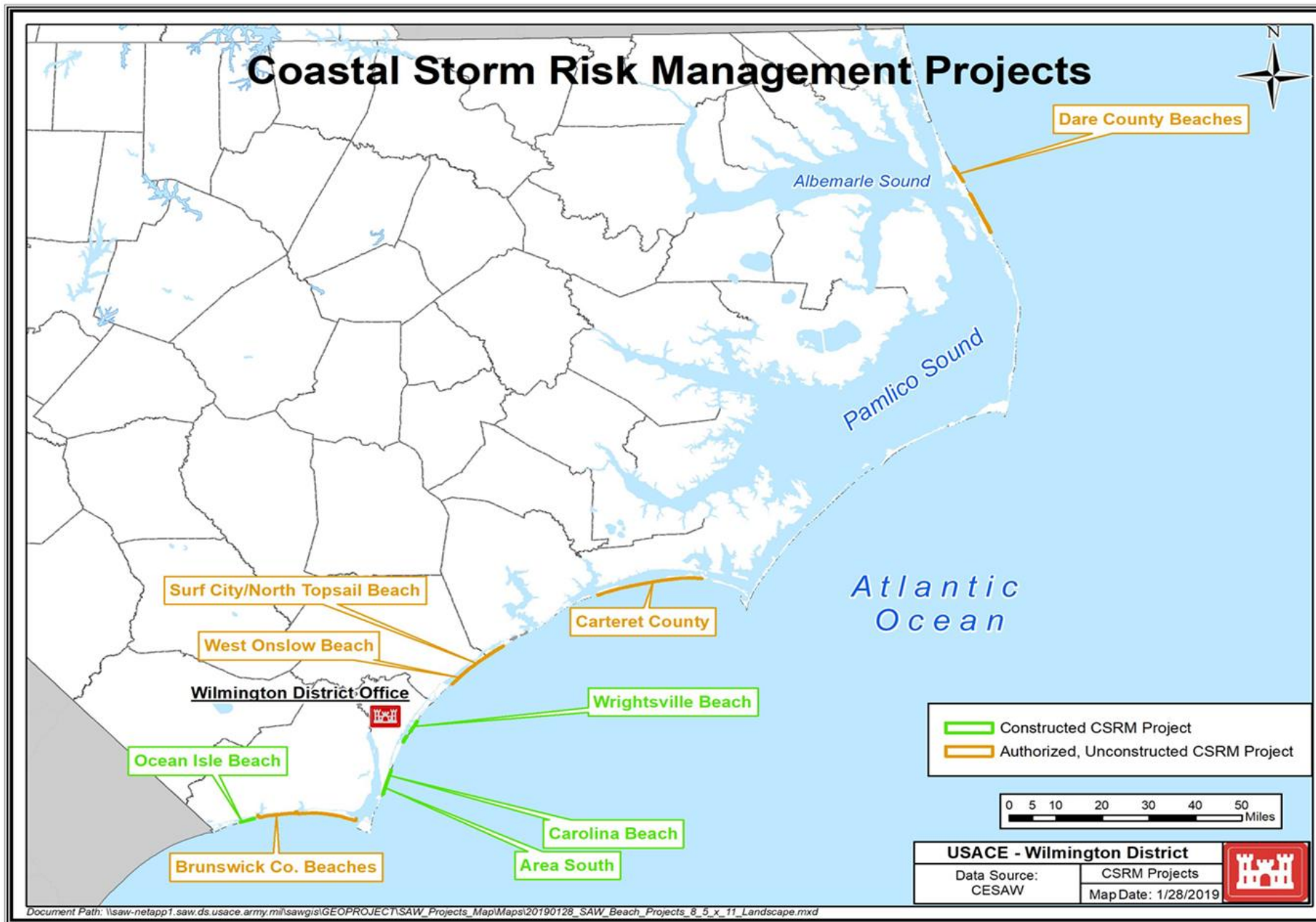


US Army Corps
of Engineers®





U.S. ARMY





U.S. ARMY

ONGOING SAW CSRM ACTIVITIES



9

- **Investigation Phase**

- Brunswick County Beaches (Holden Beach Portion) General Reevaluation Report (GRR)
 - Tentatively Selected Plan (TSP) Milestone – March 2025
 - With approval – Signed Chief's Report – Summer 2026
- Brunswick County Beaches (Oak Island Portion) General Reevaluation Report (GRR)
 - Feasibility Cost Sharing Agreement (FCSA) executed on 19 October 2023
 - Alternative Milestone Meeting (AMM) Milestone – February 2024

- **Construction Phase**

- Initial Construction
 - Surf City, NC CSRM Contract
 - Working for an amended project authorization and a contract award for initial construction in late FY24 / early FY25.
- Scheduled Renourishment Cycles
 - FY-24 Wrightsville Beach, NC CSRM Contract
 - Contract Awarded to Marinex Construction, Inc. with placement scheduled to start by Dec 2023.
 - FY-25 Carolina Beach & Vicinity, NC CSRM Contract
 - Solicitation and contract award scheduled for summer (2024) with sand placement to occur in the next environmental window (Nov 2024 – Apr 2025)
 - Brunswick County Beaches (Ocean Isle Beach Portion) CSRM Contract
 - If needed, the next renourishment cycle is scheduled for FY-26.

WILMINGTON DISTRICT: COASTAL NAVIGATION PROGRAM



US Army Corps
of Engineers®

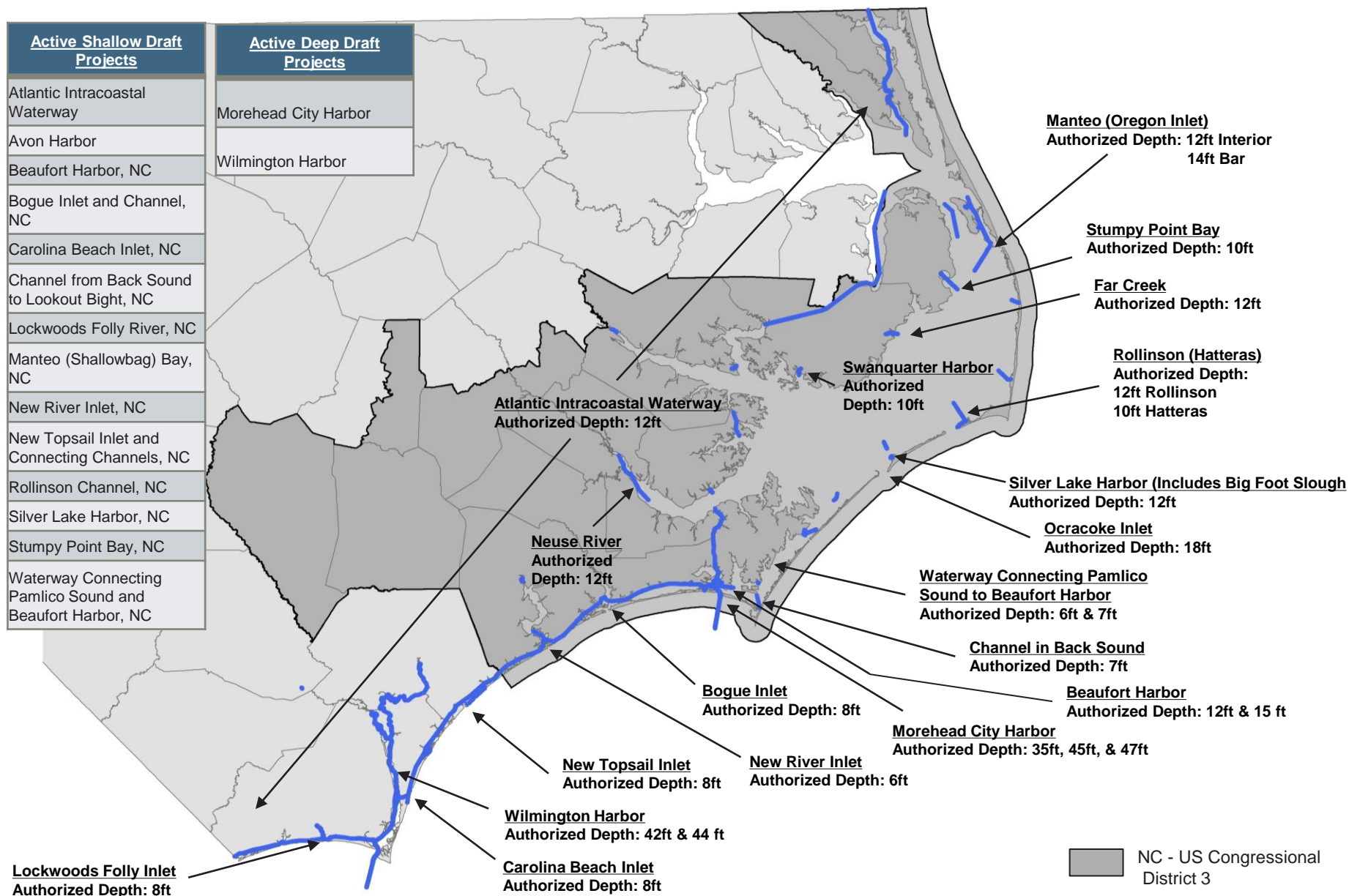




U.S. ARMY



WILMINGTON DISTRICT NAVIGATION CHANNELS

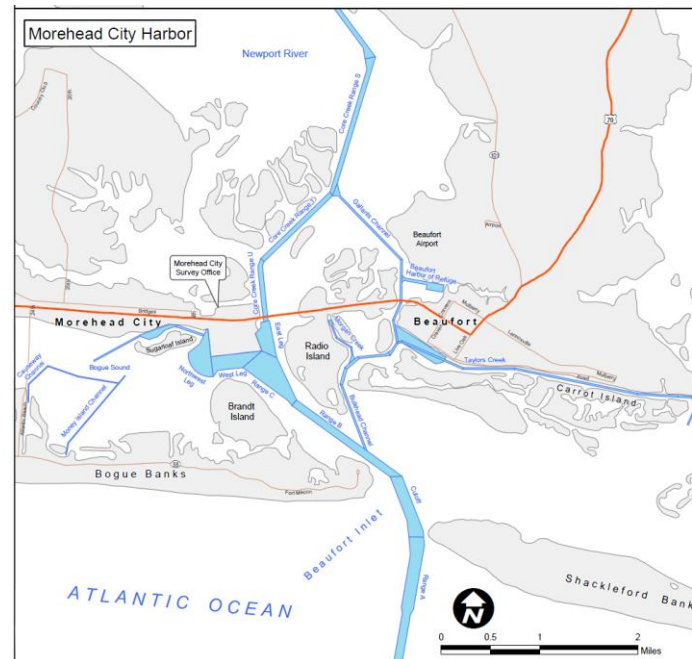
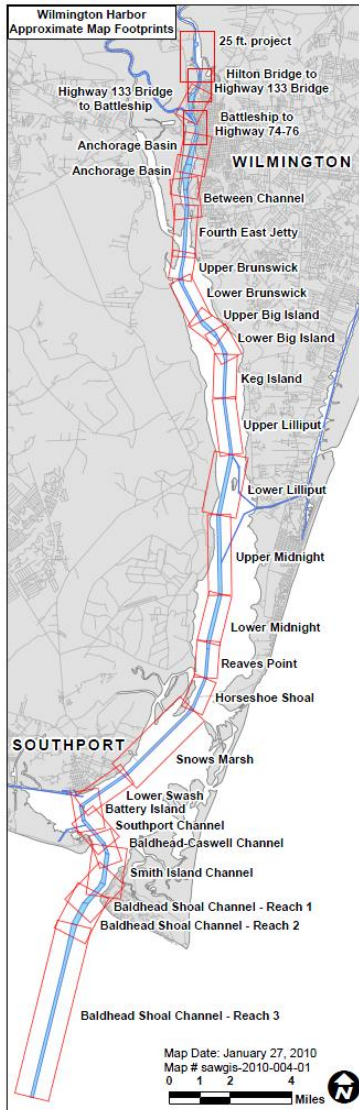




U.S. ARMY



WILMINGTON DISTRICT DEEP DRAFT PORTS



Wilmington Harbor

- Authorized Depth:
 - Ocean Bar: 44 feet
 - To Bridge: 42 feet
 - Past Bridge: 32 to 25 feet
- Tonnage: 6.3 million
- National Rank: 64

Morehead City Harbor

- Authorized Depth:
 - Range A: 47 feet
 - Cutoff Channel: 45 feet
 - Range B & C: 45 feet
 - Inner Harbor: 45 feet & 35 feet
- Tonnage: 1.8 million
- National Rank: 125



U.S. ARMY

SAW - Regional Sediment Management (RSM) Actions

13



- Regional Sediment Management is a systems approach using best management practices for more efficient and effective use of sediments in coastal, estuarine, and inland environments that equals Healthy Systems.
- RSM recognizes sediment as a valuable resource (local and regional).
- The Wilmington District has followed this approach to sand placement of many years.
- Current SAW O&M Navigation Contracts (Who is getting sand?)
 - FY-24 Morehead City Harbor Inner Ocean Bar
 - ≈ 1.1 M CY to be placed on Fort Macon / Atlantic Beach
 - FY-24 AIWW Maintenance Dredging Contract
 - $\approx 110,000$ CY to be placed on Holden Beach
 - $\approx 160,000$ CY to be placed on Emerald Isle
 - FY-25 Wilmington Harbor Inner Ocean Bar Contract
 - ≈ 1.2 M CY to be placed on Caswell Beach / Oak Island



US Army Corps
of Engineers



National Shallow Draft Fleet



MERRITT



- Only shallow draft fleet in USACE
- National asset on Atlantic & Gulf Coast

MURDEN



BRANDY STATION



CURRITUCK





U.S. ARMY



DREDGED MATERIAL MANAGEMENT FOR SHALLOW DRAFT



Island H – Manteo-Shallowbag Bay



DA-15 – Alligator-Pungo Landcut - AIWW



DA 277 across from Morningstar Marina

- In many cases it's the local sponsor's responsibility to provide and maintain
- Development and encroachment interferes with our easement rights
- Impacting our ability to maintain waterways
- USACE Policy placement area usage by non-federal entities
- PAS Study on non-federal placement areas and need



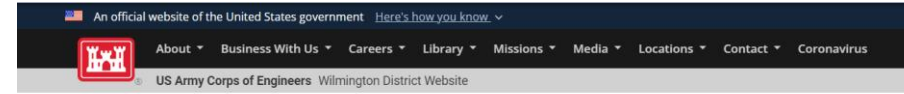
U.S. ARMY

WILMINGTON DISTRICT NAVIGATION WEBPAGE

16



- Hydrographic Survey Maps
- Public Notices
- Channel Setback Policy
- Placement Area Usage
- No Wake Zones
- Land Exchanges / Trades
- Google Earth channel files



Missions / Navigation / Hydrographic Surveys

Hydrographic Surveys

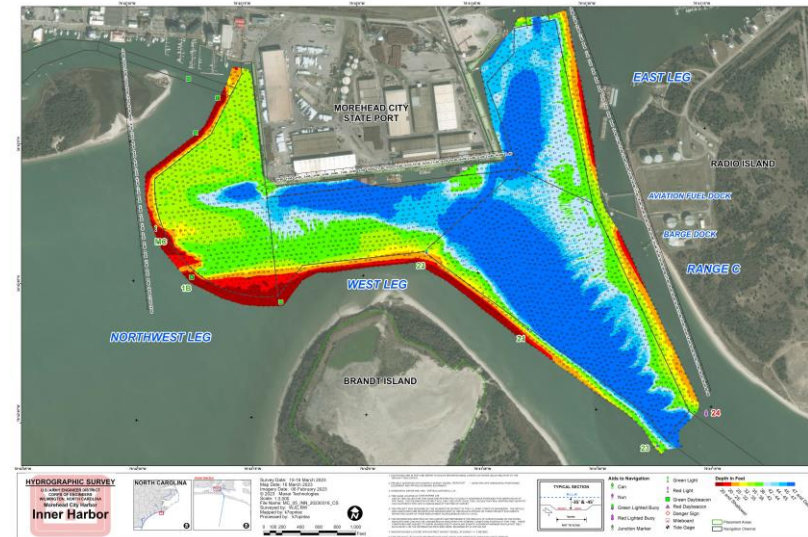
Atlantic Intracoastal Waterway
Coastal Inlets & Crossings
Manteo & Oregon Inlet
Morehead City & Beaufort Harbors
River Projects
Ferry & Side Channels / Small Harbors
Wilmington Harbor

About Hydrographic Surveys



Maps available at the links below are viewable in a web browser to provide boaters and other users with the standard hydrographic survey maps. The data is hydrographic survey data for each project. Date

NOTE: The condition surveys depicted on these drawings are published by National Ocean Service, U.S. Coast and Geodetic Survey. The soundings on these drawings are for information only and are not intended to be used for



<https://www.saw.usace.army.mil/Missions/Navigation/>



U.S. ARMY



Wilmington District Points of Contact (POCs)

ROBERT (BOB) W. KEISTLER, P.E.
CIVIL PROGRAMS & PROJECT BRANCH CHIEF
ROBERT.W.KEISTLER@USACE.ARMY.MIL
(910) 251-4709

JAMES (TODD) T. HORTON
NAVIGATION BRANCH CHIEF (ACTING)
JAMES.T.HORTON@USACE.ARMY.MIL
(910) 251-4067

SAW NAVIGATION WEBLINK:
[HTTPS://WWW.SAW.USACE.ARMY.MIL/MISSIONS/NAVIGATION/](https://www.saw.usace.army.mil/missions/navigation/)