



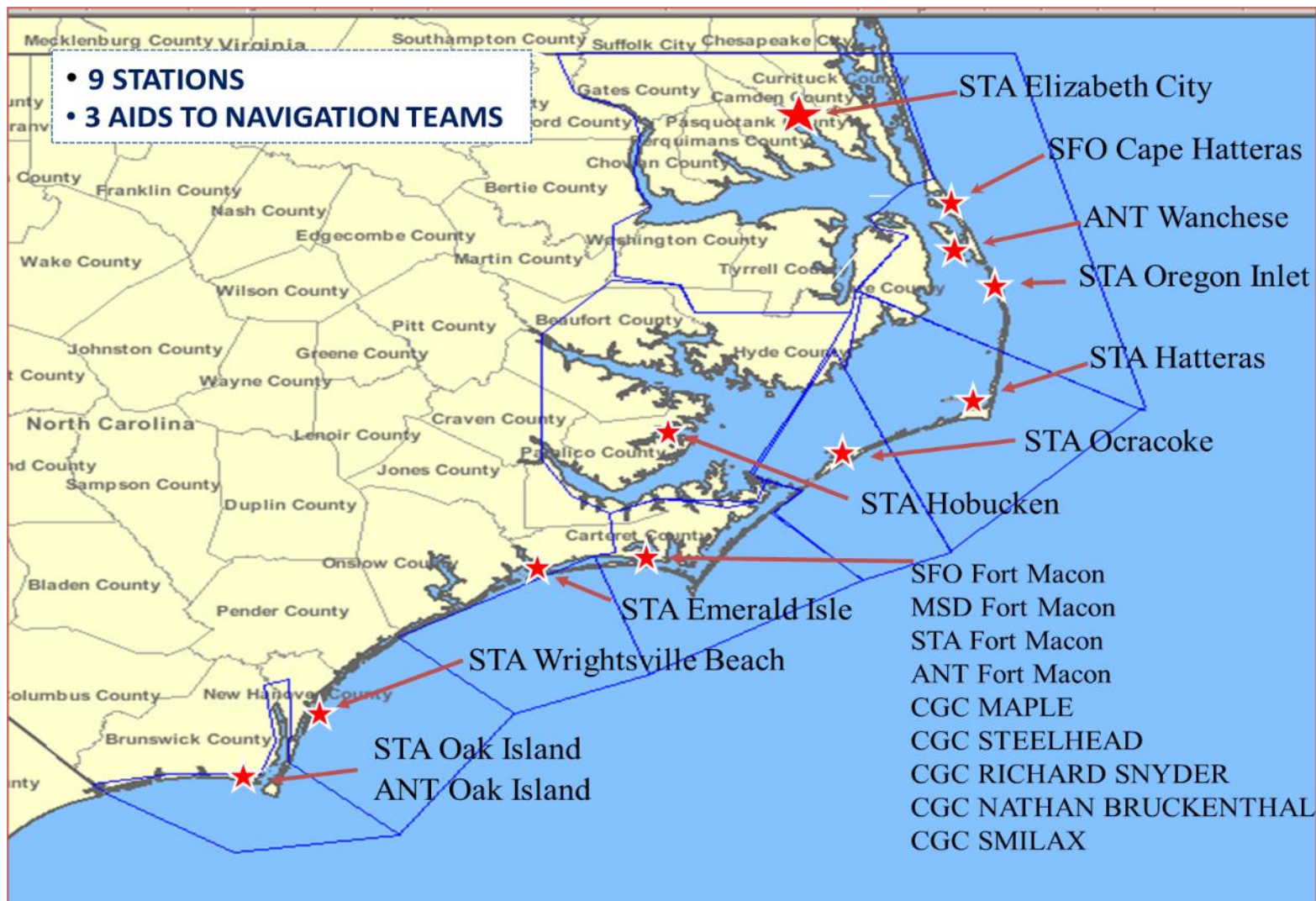
UNITED STATES COAST GUARD SECTOR NORTH CAROLINA



LT Carl Hendrickson, PE, PMP
Waterways Management
Division Chief



Sector North Carolina





Sector NC Waterways Management Org Chart

Sector NC Commander
CAPT Timothy List

Sector NC Deputy
*CDR Courtney
Sergent*

Prevention
Department Head
LCDR Mike Wu

Waterways Management
LT Carl Hendrickson

CWO Paul "Bert" Bertram
Aids to Navigation Teams
Wanchese- BMC Pat Tallant
Fort Macon- BMC Josh Link
Oak Island- BMCS Michael Gibb

Marine Event Permitting
MSTC Elvin Rodriguez
MST1 Ken Farah





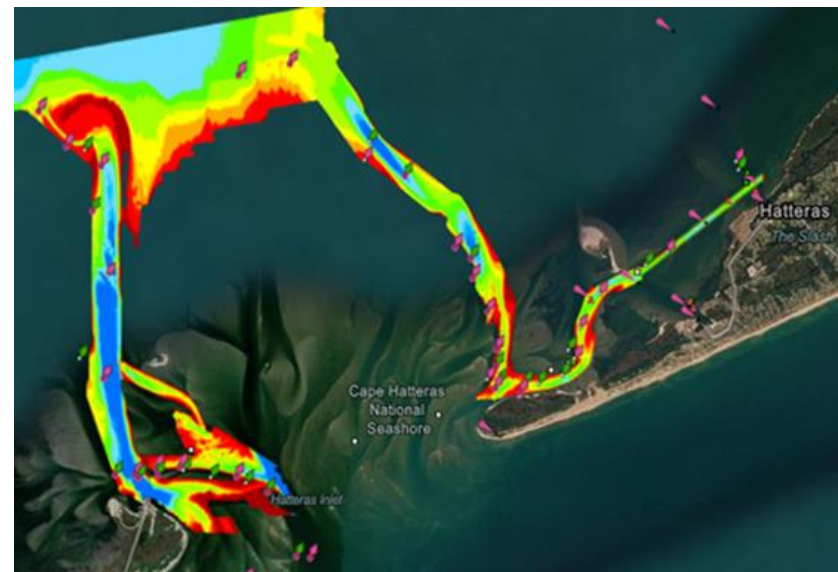
Waterways Management

Assets

- 3 Aids to Navigation Teams (Maintenance)
- CGC SMILAX (Pilings)
- CGC MAPLE (Offshore/Major Aids)

Challenges

- Constant shoaling / shifts
- Determining good water around shallow water inlets
- Crew shortages / funding





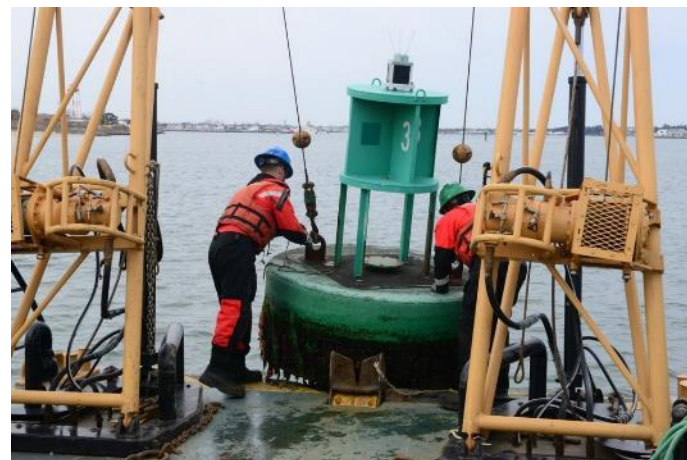
2023 Aids to Navigation Work

General

- Scheduled Inspections: 711
- Discrepancy Response: 431

Improvement Projects

- Hatteras Inlet
- Teaches Hole
- Ocracoke Inlet





Supporting Waterways Projects



Projects

- Dredging, marine events, bridge maintenance, DoD movements, etc.

Discussions

- Key stakeholders evaluate waterway impacts, concerns, & logistics

Actions

- Waterway closures, Safety/Security Zones
- Temporary aids, remarking, removals
- Cutter/Station/Aux support, PATCOMs
- Vessel inspections, worksite determinations
- Radio broadcasts, publish bulletins





North Carolina Marine Events

Purpose

- Safety
- Awareness

Process

- Form CG-4223
- Risk assessment
- Stakeholder engagement
- Environmental review
- Limited Access Area
- Coast Guard Assets
- Permit or no permit letter





Offshore Wind

Coast Guard's Role in Offshore Wind

- Advisory to BOEM
- NEPA Cooperating Agency
- Does not permit construction
- Establish safety zones





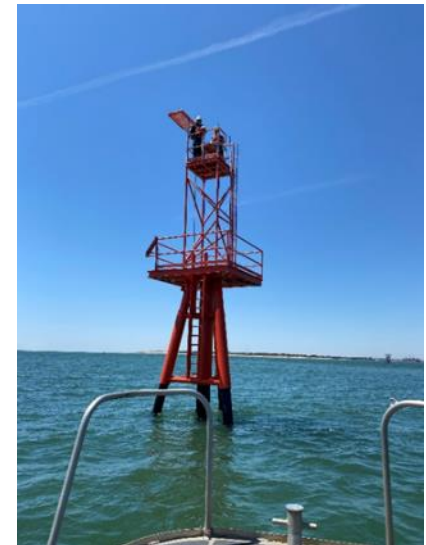
Hurricanes & Heavy Weather

Waterway Closure

- Gale force winds
 - Frying Pan Shoals
 - Beaufort Inlet Channel Sea Buoy
- Stakeholder discussions
- PORTCONs

Reconstitution

- Shoaling
- Debris
- ATON Verification





Ports and Waterways Safety Assessment Workshop

Purpose

- Dialogue w/ Port Partners
- Analyze Waterways
- Identify Risks

Process

- 2-day Workshop
- Facilitated by NAVCEN
- Disciplined Approach

Outcomes

- Non-binding mitigation measures
- Port partner cohesion and communication
- Potential development of Harbor Safety Committee





Dive Safety

Action

- MSIB
- Search and Rescue
- Investigation
- Inspection of Dive Vessels greater than 6 passengers

Safety

- Emergency Transmitter
- Dive Plan
- Safety Check
- Dive Table Parameters
- Medical Advice
- Do not dive under the influence
- Have a buddy diver

Diver Case

- Case 40 miles off the coast near Southport





Sector North Carolina

24/7 Command Center: 910-343-3880

Thank you!



**General Waterways Questions (Desk
Phone): 910-772-2230**

**Marine Event Applications: Email to
*NCMarineEvents@uscg.mil***