



WILMINGTON DISTRICT: WHAT'S NEW ON THE COAST?

Robert (Bob) W. Keistler, P.E.
Civil Programs & Project Branch

NCBIWA 2025 Spring Meeting
May 8, 2025



U.S. ARMY



US Army Corps
of Engineers



WHAT'S NEW WITH THE CORPS ON THE COAST

- Opening Remarks / USACE Info
- Wilmington Harbor Section 403 Project
- SAW Coastal Storm Risk Management (CSRM) Program
- SAW Coastal Navigation Program
- National Shallow Draft Fleet
- Partnering (Working Together To Solve Problems)



U.S. ARMY



US Army Corps
of Engineers®



WILMINGTON DISTRICT (SAW) BOUNDARIES



U.S. ARMY



US Army Corps
of Engineers®



FUNDING RELATED INFORMATION

- The U.S. Army Corps of Engineers (Corps) is an Executive Branch agency within the Department of Defense.
- The Corps is a “Project” Funded Organization.
- Corps Civil Works Projects (Authorization vs. Appropriation)
- Civil Works Appropriations (Types of Funding / Color of Money)
 - Investigations
 - Construction
 - Operation & Maintenance
 - Regulatory
- The Corps partners with local, state, tribal, and non-governmental agencies to address water resources issues through cost-sharing agreements.
- Fiscal Year for the Federal Government Oct 1 to Sept 30
- Timing of Funding



U.S. ARMY



US Army Corps
of Engineers®



Wilmington Harbor Section 403



U.S. ARMY

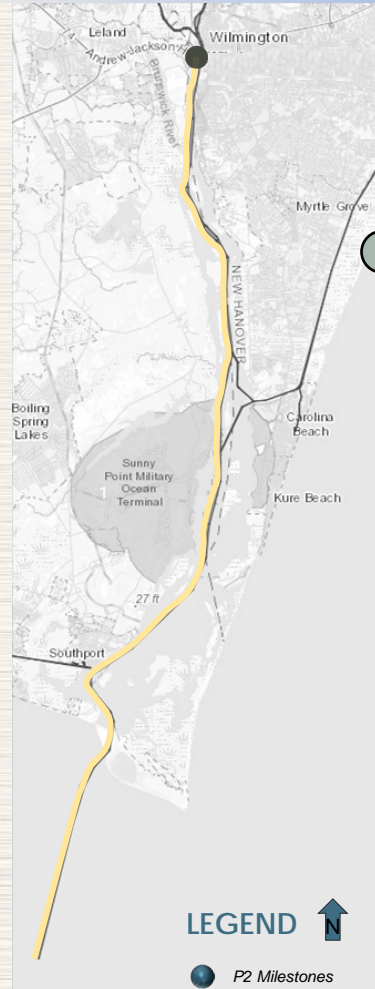


US Army Corps
of Engineers®



Wilmington Harbor (403)

Schedule Overview



MISSION STATEMENT

Wilmington District is conducting an evaluation of technical and policy concerns noted in the ASA(CW)'s May 2020 Review Assessment of the North Carolina State Ports Authority's (NCSPA) February 2020 WRDA 203 Feasibility Study which resulted in conditional authorization in Sec. 403 of WRDA 2020 of deepening the main channel to 47' from the current 42'.

FY 23 CSA, CONTRACTS, EARLY SCOPING, & ECONOMICS

OCT - DEC 2022

Project Development Team

1 Cost Share Agreement (OCT 24)

- Funding
- Scheduling
- Economics
- Contract Coordination

JAN - SEP 2023

- Econ - FWOP
- Withdraw NOI
- Climate Change Analysis
- Sea Level Rise
- Coastal EN & ENV Contract Award
- Vibracore Contract Award
- EN Quantities & Materials
- Initial CSRA
- Communication Plan
- Review Plan
- Cost Engineering for Array of Alternatives
- Plan Formulation Screening
- Econ -Future With Project
- Avg Annual Benefits & Cost

FY 24 ALTERNATIVE ANALYSIS

- Vibracore
- 2 Notice of Intent (7 JUN 2024)
- Final Quantities/ Materials
- Hydrodynamic, WQ & Sediment model run set up
- Vessel Wake Model set up
- Wave Transformation set up

FY 25 ENVIRONMENTAL IMPACT STATEMENT (EIS)

- 2 Notice of Intent (OCT 24)
- Groundwater Modeling
- Air Quality
- Hydrodynamic, WQ & Sediment model runs
- Vessel Wake Modeling
- Wave Transformation
- Shoreline Impacts
- Tide Range
- Beneficial Use Plan
- Channel Morphology
- HSI Impacts
- Wetlands Impacts
- Mitigation Plans
- Real Estate Assessments
- Biological Assessments
- Update AAEC Benefits

FY 26 FINAL REPORT

- 3 Public Review (OCT 25)
- Revise draft EIS based on Public feedback
- ATR/IEPR Review Initiated
- Cost Certification Post Review (DEC)
- 4 Final EIS & Report (APR 26)
- 5 MSC Report Endorsement (JUL 26)
- After Action Review

FY 27 RECORD OF DECISION

- 6 Record of Decision

TIMELINE

(Federal Fiscal Year)



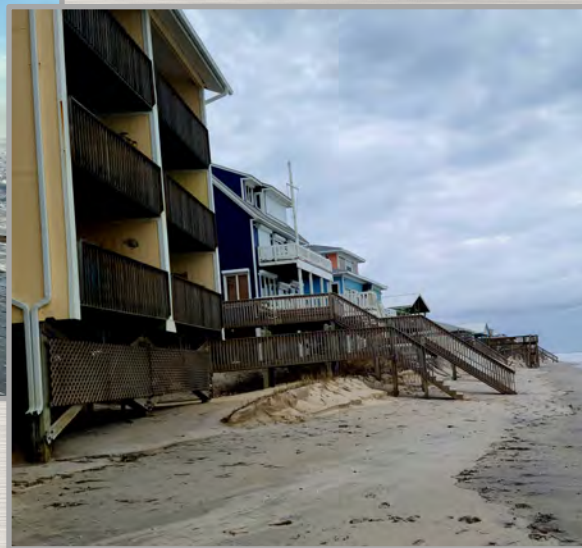
U.S. ARMY



US Army Corps
of Engineers®



Wilmington District: Coastal Storm Risk Management (CSRM) Program



U.S. ARMY



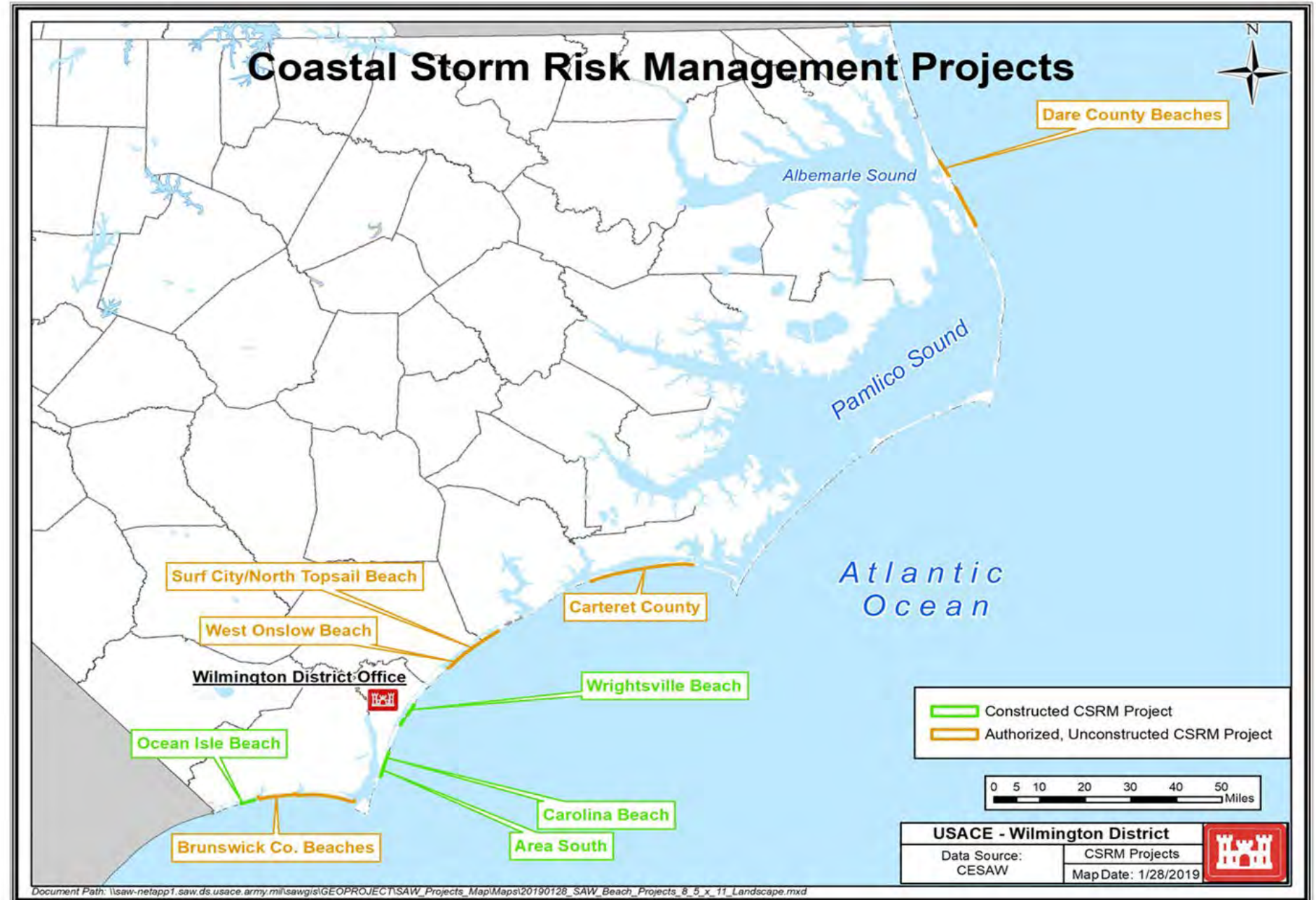
US Army Corps
of Engineers®



U.S. ARMY



US Army Corps
of Engineers®





COASTAL STORM RISK MANAGEMENT (CSRM) PROJECTS

Investigation Phase

- Brunswick County Beaches (Holden Beach Portion) General Reevaluation Report (GRR)
 - Moving to Terminate Study (No Federal Interest)
- Brunswick County Beaches (Oak Island Portion) General Reevaluation Report (GRR)
 - Alternative Milestone Meeting (AMM) Milestone – Held 07 March 2024
 - Tentatively Selected Plan (TSP) Milestone – Fall 2026
 - Signed Chief's Report – Winter 2027
- Surf City, NC CSRM Contract
 - Chief's Report (July 2025) to amend project authorization and a contract award for initial construction in FY26.

• Construction Phase

- Surf City, NC CSRM Contract
 - With approval to move to construction phase; contract award for initial construction in FY27.
- Scheduled Renourishment Cycles
 - FY-28 Wrightsville Beach, NC CSRM Contract
 - Next renourishment cycle is scheduled for FY-28
 - FY-26 Carolina Beach & Vicinity, NC CSRM Contract
 - Contract Award May 2025 - placement to occur in the next environmental window (Nov 2025 – Apr 2026)
- Brunswick County Beaches (Ocean Isle Beach Portion) CSRM Contact
 - If needed, the next renourishment cycle is scheduled for FY-26 or FY-27.



U.S. ARMY



US Army Corps
of Engineers®



Wilmington District: Coastal Navigation Program



U.S. ARMY



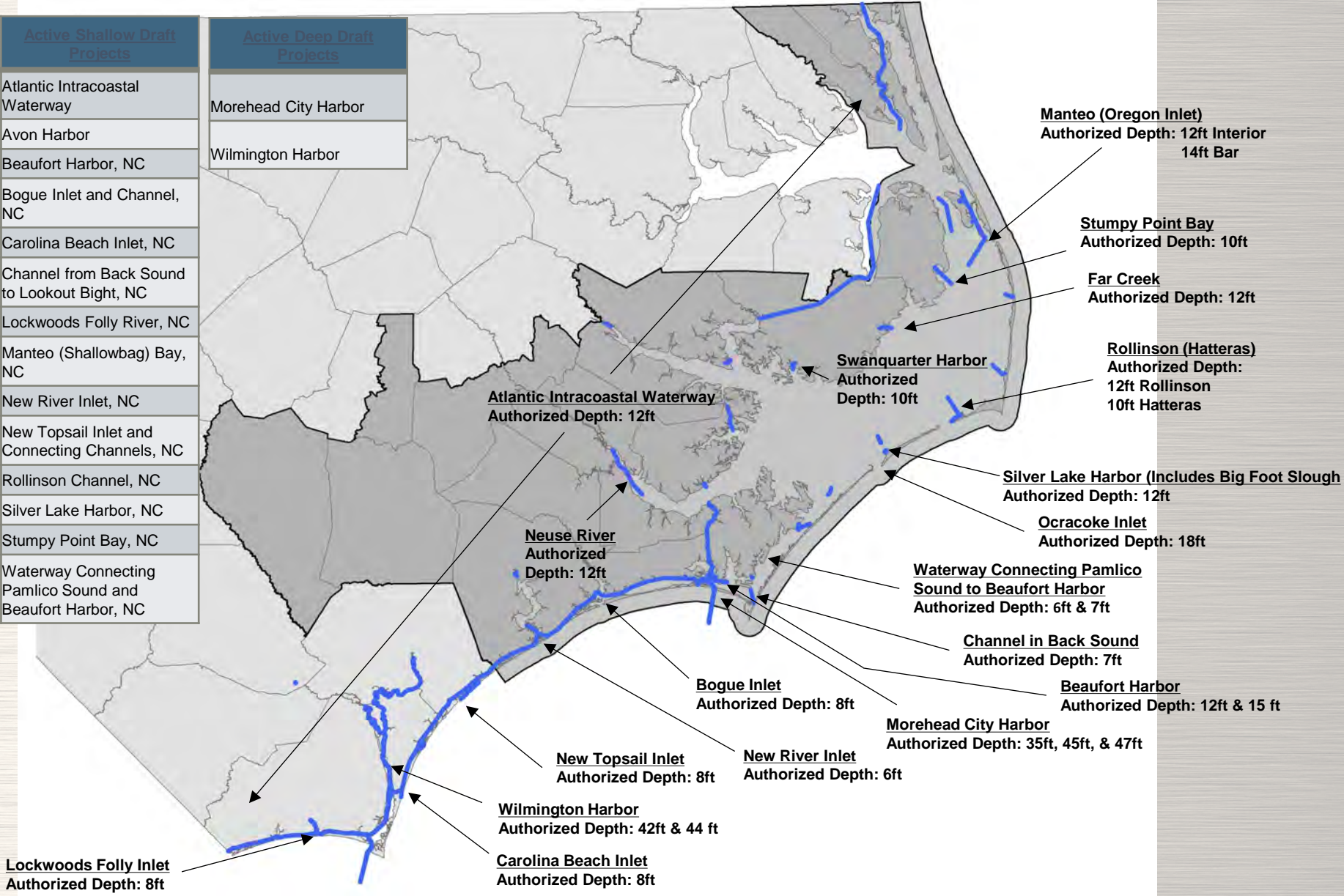
US Army Corps
of Engineers®



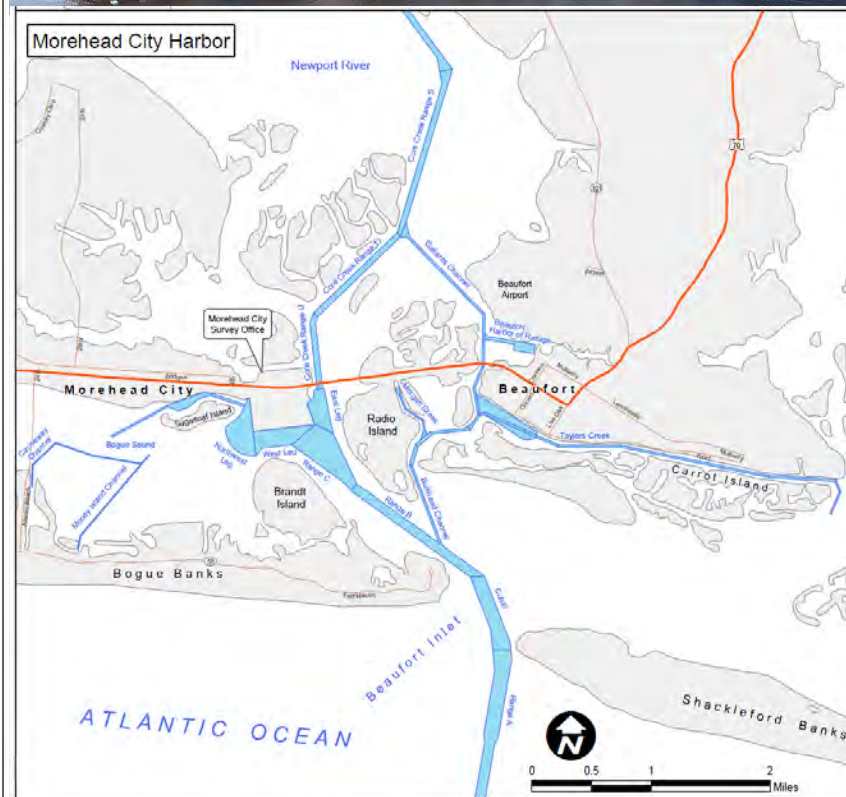
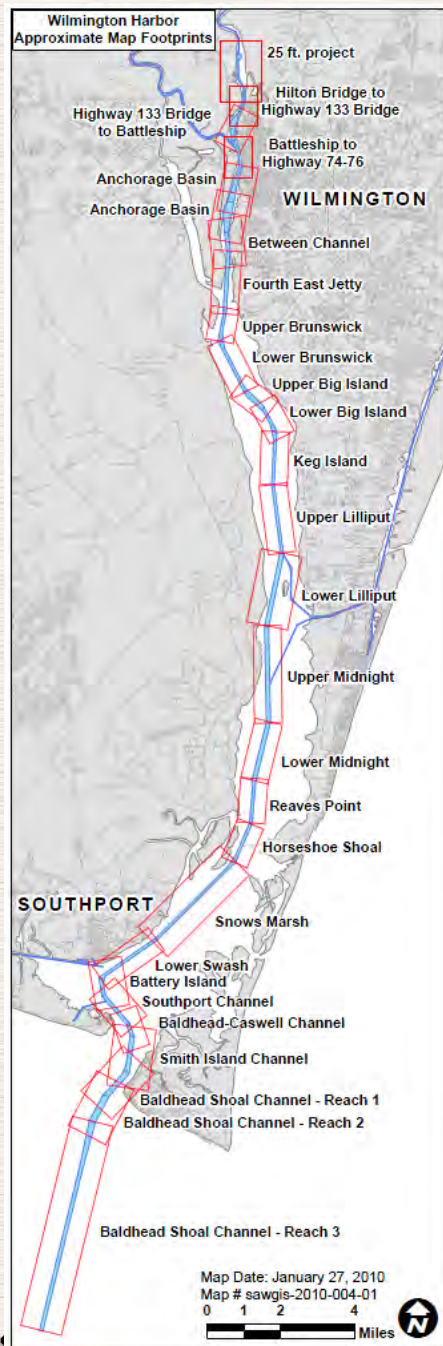
WILMINGTON DISTRICT NAVIGATION CHANNELS

Active Shallow Draft Projects
Atlantic Intracoastal Waterway
Avon Harbor
Beaufort Harbor, NC
Bogue Inlet and Channel, NC
Carolina Beach Inlet, NC
Channel from Back Sound to Lookout Bight, NC
Lockwoods Folly River, NC
Manteo (Shallowbag) Bay, NC
New River Inlet, NC
New Topsail Inlet and Connecting Channels, NC
Rollinson Channel, NC
Silver Lake Harbor, NC
Stumpy Point Bay, NC
Waterway Connecting Pamlico Sound and Beaufort Harbor, NC

Active Deep Draft Projects
Morehead City Harbor
Wilmington Harbor



US Army Corps
of Engineers®



Wilmington Harbor

- Authorized Depth:
 - Ocean Bar: 44 feet
 - To Bridge: 42 feet
 - Past Bridge: 32 to 25 feet
- Tonnage: 7 million
- National Rank: 62
- Note: Strategic Port (MOTSU)

Morehead City Harbor

- Authorized Depth:
 - Range A: 47 feet
 - Cutoff Channel: 45 feet
 - Range B & C: 45 feet
 - Inner Harbor: 45 feet & 35 feet
- Tonnage: 2.3 million
- National Rank: 108
- Note: Strategic Port (Camp Lejeune)



U.S. ARMY



US Army Corps
of Engineers®



SAW CONTRACT UPDATE

Construction Funded Contracts:

- FY-26 Carolina Beach / Kure Beach CSRM Contract (Award - 08 May 2025)

O&M Funded Contracts:

- FY 26 Wilmington Harbor Inner Ocean Bar MD Contract (Award – 15 May 2025)
- FY 26 Wilmington Harbor Anchorage Basin – Mid-River MD Contract (4th Q FY-25 Award)
- FY 26 Wilmington Harbor Outer Ocean Bar MD Contract (RHDC #1)(4th Q FY-25 Award)
- FY 25 MOTSU MD Contact (4th Q FY-25 Award)
- FY 26 Morehead City Harbor Ocean Bar Contract (RHDC #2)(4th Q FY-25 Award)
- FY 26 AIWW Inlet Crossing MD Contact (4th Q FY-25 Award)
- FY-26 Rollinson Channel/Silver Lake Harbor MD Contract (4th Q FY-25 Award)

Note: MD = Maintenance Dredging

RHDC = Regional Harbor Dredging Contract



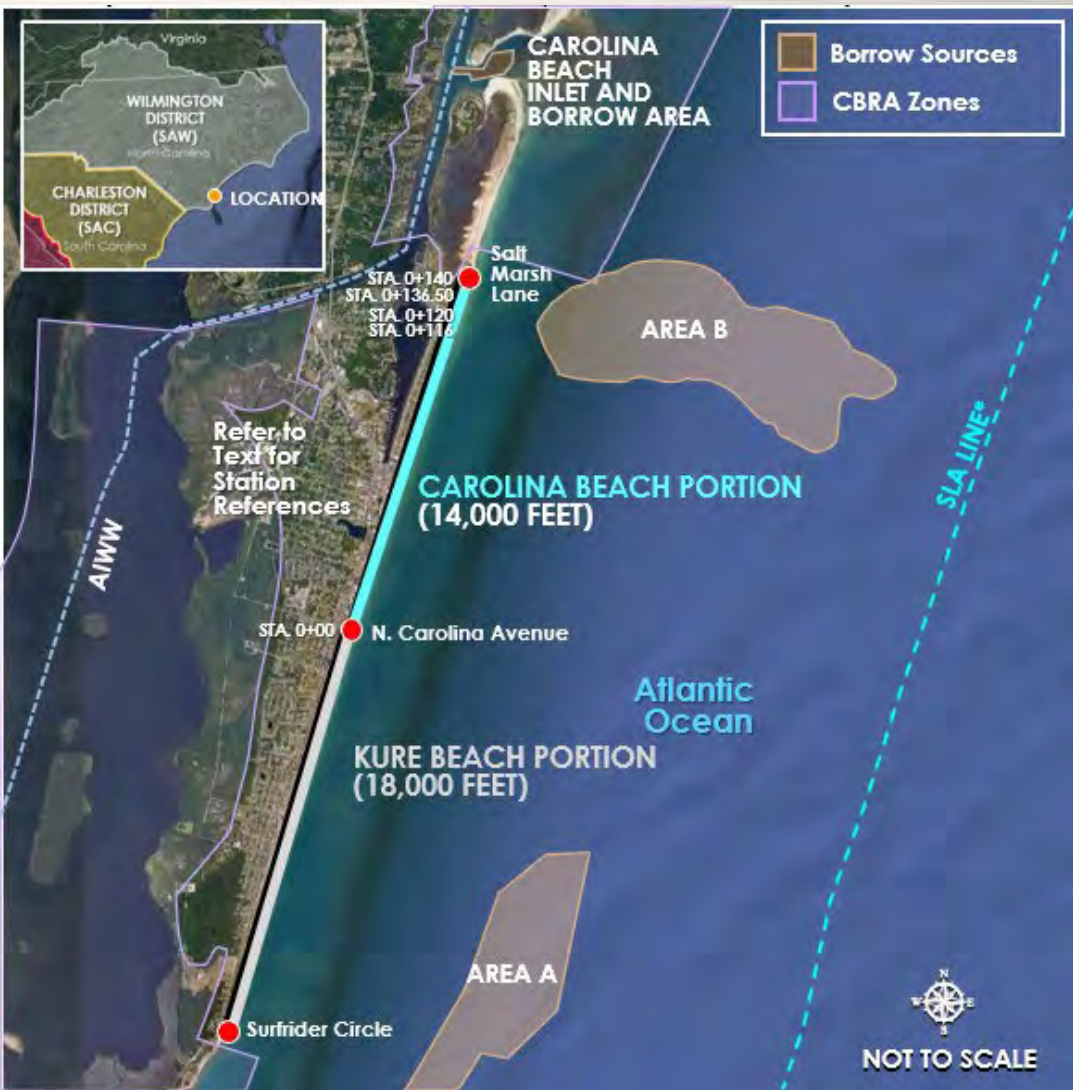
U.S. ARMY



US Army Corps
of Engineers®



FY-26 CAROLINA BEACH / KURE BEACH, NC COASTAL STORM RISK MANAGEMENT (CSRSM)



LOCATION: New Hanover County, NC

DREDGE TYPE: Pipeline

ESTIMATED QUANTITY: 1,560,000 CY (Total)
CB: 800,000 CY
KB: 760,000 CY

CONTRACT AWARD: 08 May 2025

CONTRACTOR: Norfolk Dredging Company

ESTIMATED COST: \$23.5 M (Total)
CB: \$ 9.8 M (Cost Share 50 / 50)
KB: \$ 13.7 M (Cost Share 65 / 35)

ENV. WINDOW: November 16 – April 30 (Beach)



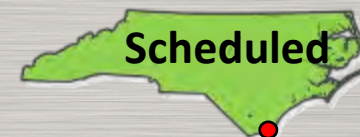
U.S. ARMY



US Army Corps
of Engineers®



FY-26 WILMINGTON HARBOR INNER OCEAN BAR CONTRACT



LOCATION: Brunswick County, NC

DREDGE TYPE: Pipeline

ESTIMATED QUANTITY: 1,350,000 CY (Total)

Base: 750,000 CY

Option: 600,000 CY

CONTRACT AWARD: 15 May 2025

CONTRACTOR: Norfolk Dredging Company

ESTIMATED COST: \$ 25.3 M (Total)

Base: \$ 18.7 M (Federal)

Option: \$ 6.6 M (Non-Fed)

ENV. WINDOW: November 16 – April 30 (Beach)



U.S. ARMY



FY-26 WILMINGTON HARBOR INNER OCEAN BAR CONTRACT



CASWELL AND OAK ISLAND BEACH PLACEMENT



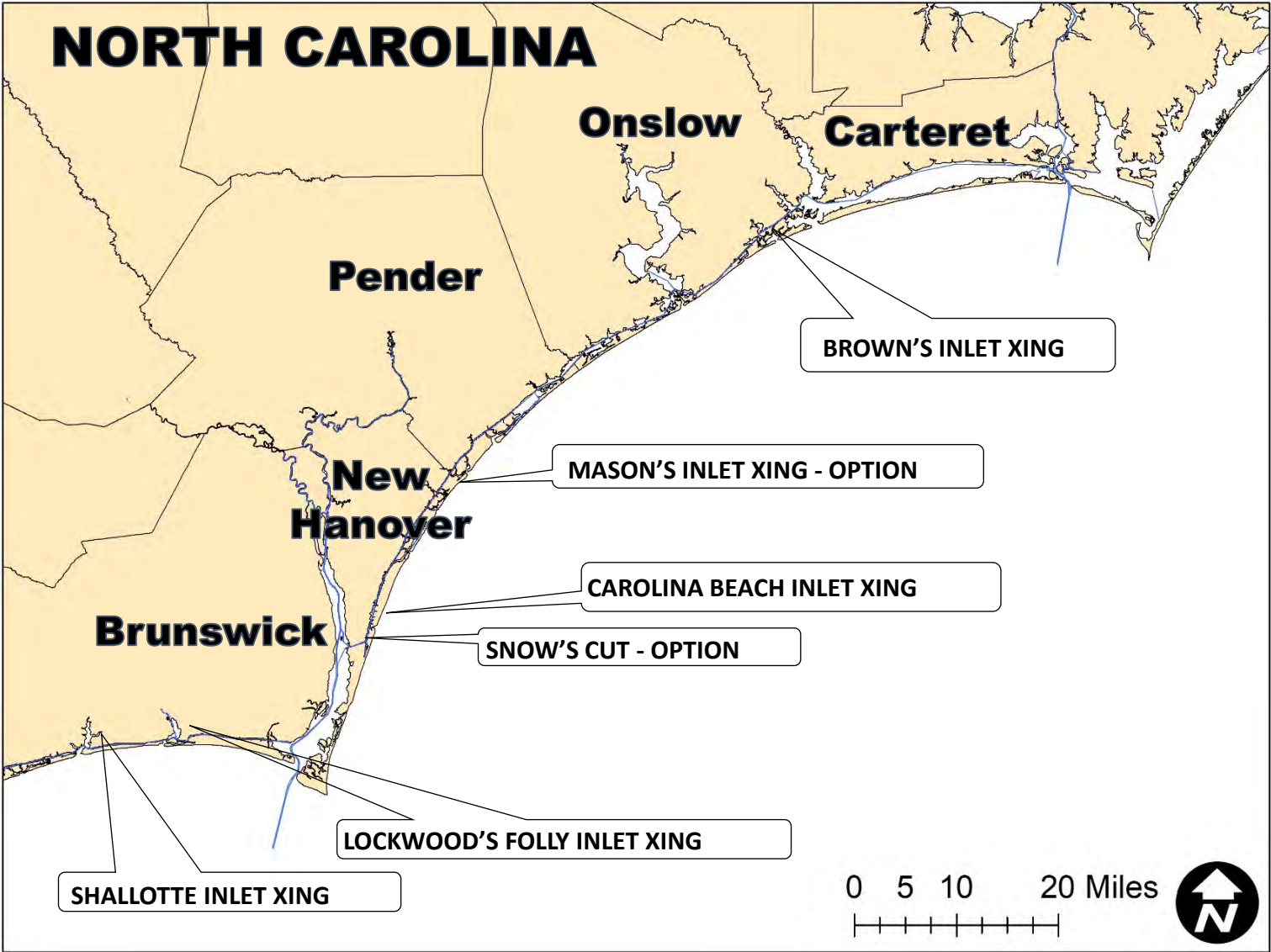
U.S. ARMY



US Army Corps
of Engineers®



FY26 AIWW INLET CROSSING MAINTENANCE DREDGING



U.S. ARMY



US Army Corps
of Engineers®



NATIONAL SHALLOW DRAFT FLEET



Map Date: January 3, 2024
Map # sawnavgis-2011-017-07

MERRITT



- Only shallow draft fleet in USACE
- Limited industry equivalent
- National asset on Atlantic & Gulf Coast
- 34 Different projects in 2023 - 2024 which encompassed 6 Districts and 3 MSCs
- Long Term MOA with State of North Carolina is an avenue for non-Federal stakeholders to help fund Federal projects

BRANDY STATION



MURDEN



U.S. ARMY

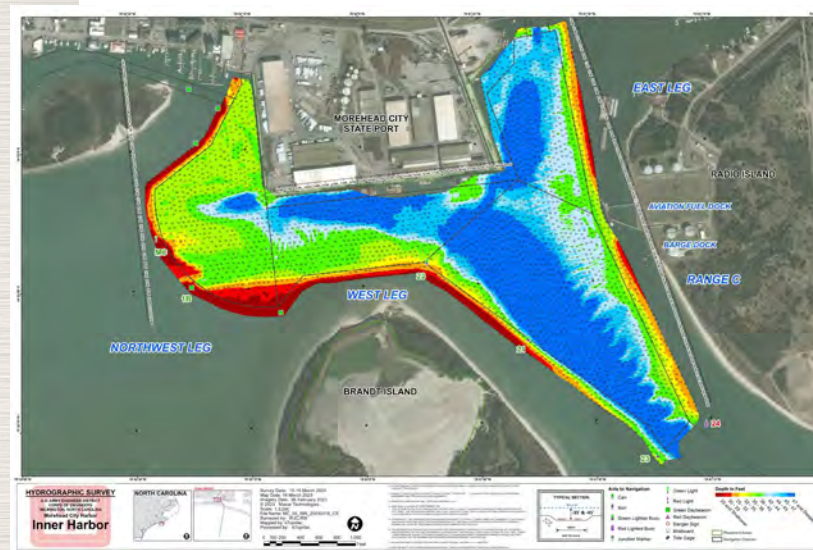
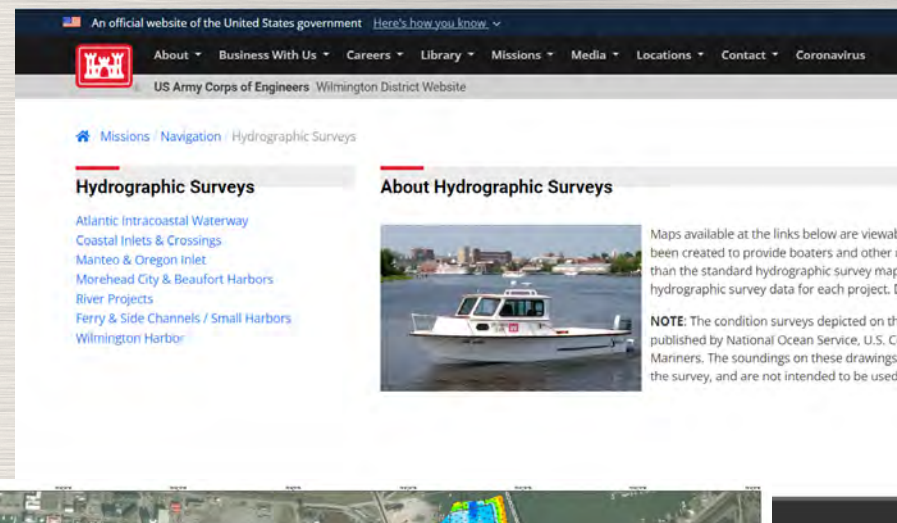


US Army Corps
of Engineers®



WILMINGTON DISTRICT NAVIGATION WEBPAGE

- Hydrographic Survey Maps
- Public Notices
- Channel Setback Policy
- Placement Area Usage
- No Wake Zones
- Land Exchanges / Trades
- Google Earth channel files



U.S. ARMY

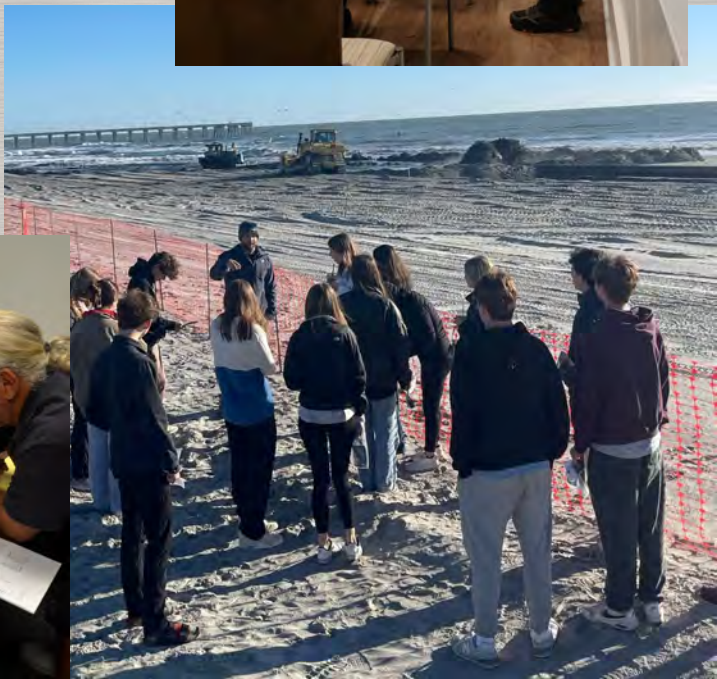
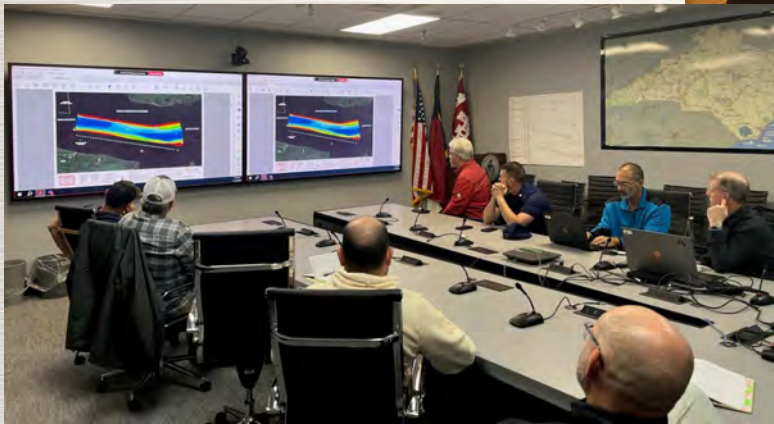


US Army Corps
of Engineers®

[HTTPS://WWW.SAW.USACE.ARMY.MIL/MISSIONS/NAVIGATION/](https://www.saw.usace.army.mil/missions/navigation/)



PARTNERING (SOLVING PROBLEMS / ISSUES TOGETHER)



U.S. ARMY



US Army Corps
of Engineers®



WILMINGTON DISTRICT POINTS OF CONTACT (POCS)

Robert (Bob) W. Keistler, P.E.
Chief, Civil Programs & Project Branch
robert.w.keistler@usace.army.mil
(910) 251-4709

James (Todd) T. Horton
Chief, Navigation Branch
james.t.horton@usace.army.mil
(910) 251-4067

Saw Navigation Weblink:
<https://www.saw.usace.army.mil/missions/navigation/>



U.S. ARMY



US Army Corps
of Engineers®